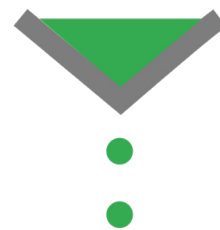


*filtration tailored to your needs*



**filtraTECH**



**CATALOGUE**  
EDITION 2022  
EN





**A**s a French company dedicated to filtration for laboratories and industries, filtraTECH offer an exhaustive range of analytical filter papers (quantitative, qualitative, standard), glass microfiber filters, special papers (for protection, cleaning, weighing, chromatography...) and amongst other products, micro filtration articles (membranes, syringe filters).

Thanks to the 30-year-old expertise of the team, the company demonstrates our know-how in accompanying and advising our customers in the choice and development of tailored solutions.

The small structure of the company enables flexible and agile responses to specific customer's requests. Our know-how lays in our ability in tailoring products to the most specific requests and we are capable of developing particular converting tools.

Because the world is always changing and that we need to keep adjusting, we would be glad to receive all your comments or questions. Help us improve our processes, catalogue or products and feel free to contact our team at [info@filtratech.fr](mailto:info@filtratech.fr).

We thank you for trusting filtraTECH 's team and we are glad to present you filtraTECH 's catalogue.

## Partners first

Buying products from filtraTECH is not only about choosing high quality products with reasonable pricing, it is asking for efficient and complete service, strong quality management and customer oriented strategy. That is why once a distributor works with us, we start building an in-depth partnership in which everyone is gainful.

In this niche market, we deliver the best service to all our customers from the smallest to the biggest businesses, the local or the foreign ones. Partners praise our reactivity, dynamism and kindness.

Our distributors can count on us for respecting our commitments and contracts on the long run. Your satisfaction is our core priority, respect and reliability are our common grounds.

## European sourcing & made in France

We select our suppliers with the greatest care and are proud that all our filter paper suppliers are in Europe. This enables us to work with high quality raw material manufactured in respect of the most demanding standards, with a lower impact on the environment.

We convert the filters in France where we handle all our operations (manufacturing, packing, handling). Through the years, we have been investing in more modern and efficient machines to increase and anticipate our production capacity. And though we remain a small company, the team is growing every year. We are proud to contribute to the French Industry.





# MANAGEMENT OF QUALITY

## ISO 9001 Certification

ISO 9001:2015 is the reflect of the everyday efforts of the team and of our commitment for continuous progress on all fields (work organization, internal and external communication, help guidelines...). The ambitious Quality project of reorganizing the company as requested by the standards was successfully achieved and filtraTECH obtained its certification in 2018 by SGS, giving the company an international outreach.



Shall our partners be associates, suppliers, employees or service providers, they can rest assured that we are fully committed to the satisfaction and fulfilment of all. Quality is truly and sustainably at the very heart of filtraTECH's philosophy.

## Process compliance & continuous quality control

In order to guarantee the best quality of our services and products, we detailed every step of your order (order receipt, manufacture, preparation, shipment, billing, complaint) in processes. The different procedures described make it possible to ensure that the treatment will be identical regardless of the operator.

The procedures implemented at filtraTECH involve quality control at all stages of manufacturing: visual inspection, quantitative verification, and compliance with both customer and internal specifications. In the event of a complaint, it is therefore easy to identify its cause and deal with it efficiently in order to avoid replicating any incidents.



## Traceability

The filtering products of our range meet well-defined technical characteristics. We only work with suppliers capable of meeting these requirements and guaranteeing the reliability and durability of the products.

From the receipt of raw materials to the delivery of finished products in your warehouses, we rigorously monitor each stage of manufacturing and preparation of your orders and a batch number traces each item.

To help you go through this catalogue, we have created some pictograms as follows:



PLAIN DISCS



FOLDED DISCS



DISCS PLEATED IN 4



PLAIN DISC + HOLE



SHEETS



HAND-FOLDED SHEETS



BOOKLET



ROLL





Buying products from filtraTECH is not only about choosing high quality products with reasonable pricing, it is asking for efficient and complete service, strong quality management, and customer oriented strategy.  
Your satisfaction is our core priority.

## BEYOND MAINSTREAM PRODUCTS

Our catalogue covers a wide range of filtration products and therefore applications. However, if you do not find the product you need in our range, we will work with our suppliers to find the product that will give you the most satisfying alternative. In the same spirit, we develop and design cutting tools for less common formats. All you have to do is specify your needs or send us your technical drawing and we will manufacture the right tool.

Our expertise is not limited to cutting, we also know how to innovate in folding, packaging... Do not hesitate to consult us for your special requests.

## STRONG SERVICES

### Maximized stock

Our financial independence guarantees the freedom to choose the strategy that we think is most customer-oriented: we conduct a policy of high levels of stocks in order to reduce the lead time as much as possible. For over 90% of the best-selling references, we guarantee sufficient stock levels to be able to deliver your orders as quickly as possible (average lead time 2 weeks).

### Short response times

With your satisfaction as a top priority, we know that waiting time to get a quote or any other piece of information can make you lose business. That is why we are committed to confirm your orders within 48 hours. Requests for documentation (catalogue, data sheet, safety data sheet, price request...) are treated with the same rigor. Should you have to respond quickly to a tender, you can count on us to support you in closing your deals. Our availability and responsiveness are the keys to your satisfaction.

### Optimized order flow

To facilitate your inventory management and reduce your transport costs, we apply as much as possible the consolidation of your orders into a single shipment, fully or partially. This allows you to serve your customers faster. Whenever a request is urgent (your customer is out of stock), we know how to make express dispatches to help you out. Do not hesitate to contact us.

### Free samples

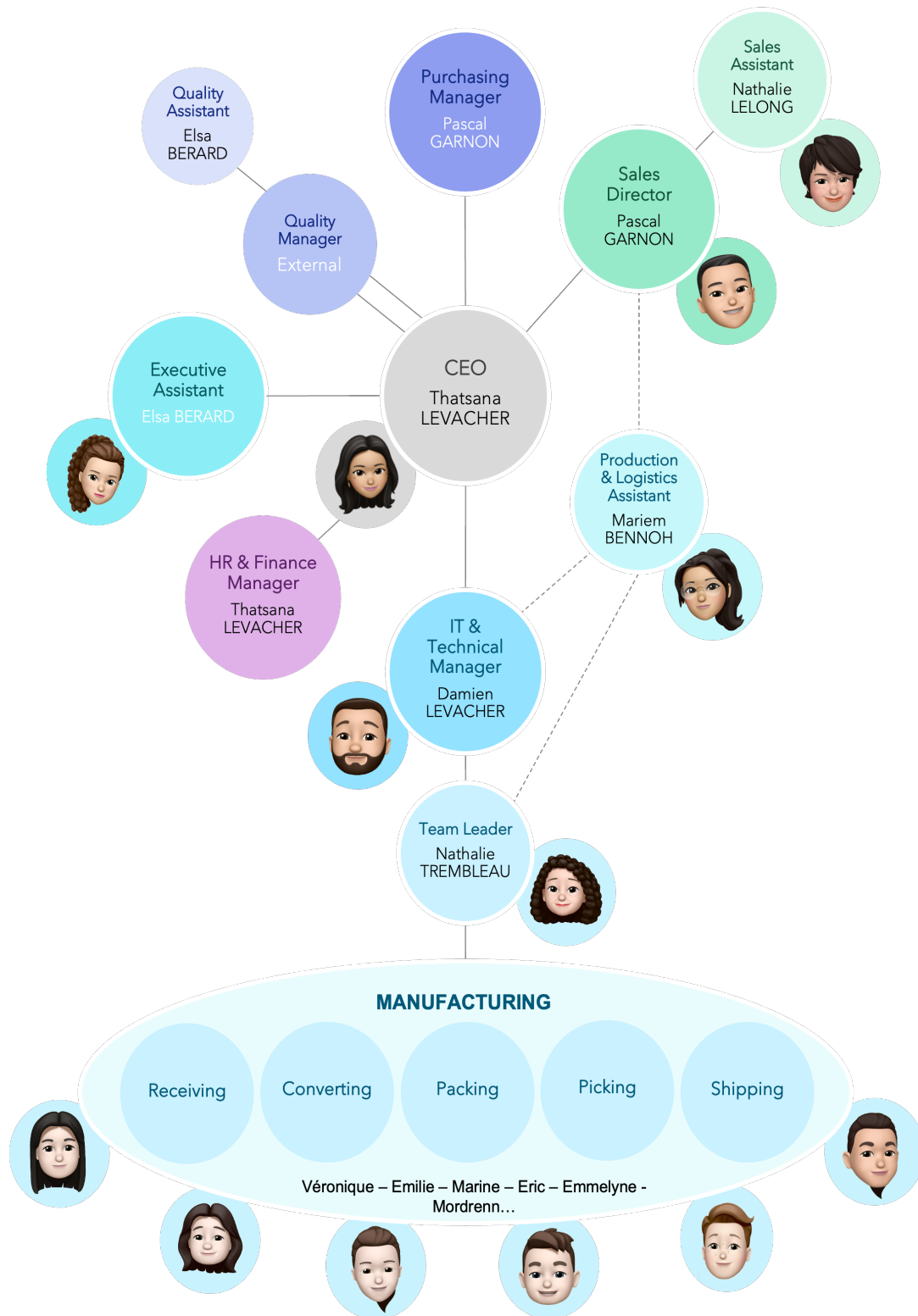
You are not sure a product is completely suitable for your application? You are answering a tender with samples requested? You are a new customer and would like to know more about filtraTECH's products? Just contact us. We gladly provide you with free samples of the whole range.

### Sales documentation

Every step of the way, we keep in mind to develop solid partnerships with our distributors and in this sense, we always try to provide them with the best services using all our knowledge and know-how. Our role is to counsel and accompany you in the choice of the most suitable products and in the adaptation of the solutions to the end-user needs. To this end, we have created a series of sales documentation to hand to your sales team (thematic leaflets, application field product guides, training...). If you are interested in receiving them, please contact our sales team.







### Customer Service

Samples, quotation, technical information...

**Pascal Garnon** : +33 (2) 38 54 52 52

**Corinne Dulac** : +33 (2) 38 54 52 53

[sales@filtratech.fr](mailto:sales@filtratech.fr)

### Accounting Department

Invoices

**Thatsana Levacher**

**Corinne Dulac** : +33 (2) 38 54 52 50

[invoice@filtratech.fr](mailto:invoice@filtratech.fr)





# Table of content

---

<b>Standard filter papers</b>	<b>8</b>
<b>Qualitative analytical filters</b>	<b>10</b>
<b>Quantitative analytical filters</b>	<b>12</b>
Quantitative filters for specific applications	14
Strengthened ashless filter	14
<b>Glass / Quartz microfiber filters</b>	<b>16</b>
Glass microfiber filter without binder	16
Glass microfiber filter with binder	18
Quartz microfiber	18
<b>Special papers and other laboratory consummables</b>	<b>20</b>
Bench protective paper	20
Joseph paper	21
Cleaning paper	21
Holder for cleaning paper	21
Lens cleaning tissue	22
Blotting pad	22
Weighing paper	23
Weighing boat	23
Aluminium weighing plate	23
Phase separating paper	24
Phosphate-free filter paper	24
Nitrogen-free filter paper	25
Black filter paper	25
Activated carbon filter paper	26
Brewery industry filter paper	26
Test seed paper	27
Sugar industry filter paper	28
Non woven filter & filter card	29
Antibiotic assays	30
Cyto-centrifugal paper	30
Specimen collection paper	30
Sterilization paper	31
Sterilization indicator tape	31
Chromatography	32
Blotting paper	33
Printed circuit board control paper	33
Cellulose stoppers	34
<b>Indicator paper</b>	<b>35</b>
pH indicator paper	36
Reagent paper	37
Non bleeding pH test strip	38
Liquid pH pack	38



<b>Membranes filters</b>	<b>39</b>
CA - Cellulose acetate	39
MCE - Mixed cellulose esters	40
MCE - Continuous membranes	41
Membrane dispenser	41
NYL - Polyamide	41
PC - Polycarbonate	42
PES - Polyethersulfone	42
PP - Polypropylene	42
PTFE - Polytetra-fluoroethylene	43
RC - Regenerated cellulose	43
<b>Filtration devices</b>	<b>44</b>
Glass solvent filters	44
Vacuum pump	44
SS316 multiple-branch manifold for vacuum system	44
<b>Syringe filters</b>	<b>45</b>
CA - Cellulose acetate	46
FV - Glass microfiber	47
MCE - Mixed cellulose esters	47
NYL - Polyamide	48
PES - Polyethersulfone	49
PP - Polypropylene	49
PVDF - Polyvinylidene	50
RC - Regenerated cellulose	50
PTFE - Polytetra-fluoroethylene	51
Venting filters	51
<b>Table of chemical compatibility</b>	<b>52</b>
<b>Extraction thimbles</b>	<b>53</b>
<b>Technical filters</b>	<b>54</b>
Smooth	54
Creped	56
<b>Filter boards</b>	<b>58</b>
<b>Filter press system</b>	<b>58</b>
<b>Filter sheets</b>	<b>59</b>
Prefiltration	59
Clarification	60
Sterilization	60
<b>Non woven filters</b>	<b>61</b>
<b>Mesh filters</b>	<b>61</b>
<b>Index</b>	<b>62</b>
<b>Table of comparison</b>	<b>63</b>



# STANDARD FILTER PAPERS

## Applications



The standard filter papers are made with 100% cellulose and can have various applications in hospitals / medical fields, in research laboratories, in schools/universities, in industry such as chemical, pharmaceutical, cosmetic, water treatment, food...




filtraTECH's grades: **ST60** | **ST61** | **ST62** | **ST63** | **ST64** | **ST67**



	Weight (g/m <sup>2</sup> ) DIN 53104	Thickness (mm)	Pore size (µm)	Filtration speed (sec) DIN 53137	Burst strength (kg/cm <sup>2</sup> )
<b>ST60</b> // Whatman : 93	<i>Smooth filter paper with medium filtration for general applications, economical</i>				
	64	0.15	10-20	30	1.45
<b>ST61</b> // Whatman : 1	<i>Filter paper for analytical works in laboratories with medium filtration</i>				
	73	0.16	5-13	35	1.95
<b>ST62</b> // Whatman : 114	<i>Smooth filter paper with fast filtration for general works</i>				
	73	0.17	17-30	15	1.25
<b>ST63</b>	<i>Thin filter paper with fast filtration</i>				
	60	0.14	20-25	20	1.05
<b>ST64</b> // Whatman : 113	<i>Creped filter paper with very fast filtration</i>				
	120	0.35	30-40	10	0.75
<b>ST67</b>	<i>Very thin filter paper with very fast filtration</i>				
	50	0.12	17-30	15	0.25



# Item codes

	Size (mm)	ST60	ST61	ST62	ST63	ST64	ST67
	45	ST60A0045		ST62A0045			
	47	ST60A0047	ST61A0047			ST64A0047	**
	55	ST60A0055	ST61A0055	ST62A0055			
	70	ST60A0070	ST61A0070	ST62A0070		ST64A0070	**
	90	ST60A0090	ST61A0090	ST62A0090		ST64A0090	**
	100	ST60A0100		ST62A0100			
	110	ST60A0110	ST61A0110	ST62A0110		ST64A0110	**
	125	ST60A0125	ST61A0125	ST62A0125		ST64A0125	**
	130	ST60A0130		ST62A0130			
	150	ST60A0150	ST61A0150	ST62A0150	ST63A0150	ST64A0150	**
	185	ST60A0185	ST61A0185	ST62A0185		ST64A0185	**
	190	ST60A0190		ST62A0190			
	210	ST60A0210	ST61A0210	ST62A0210			
	240	ST60A0240	ST61A0240	ST62A0240		ST64A0240	** ST67A0240D *
	250	ST60A0250		ST62A0250			
	270	ST60A0270	ST61A0270	ST62A0270			
	320	ST60A0320	ST61A0320				
	330	ST60A0330		ST62A0330			
	400	ST60A0400	ST61A0400	ST62A0400			
	500	ST60A0500	ST61A0500	ST62A0500		ST64A0500	**
	70	ST60P0070	ST61P0070	ST62P0070			
	100	ST60P0100	ST61P0100	ST62P0100			
	110	ST60P0110	ST61P0110	ST62P0110			
	130	ST60P0130	ST61P0130	ST62P0130		ST64P0125	
	150	ST60P0150	ST61P0150	ST62P0150		ST64P0150	
	190	ST60P0190	ST61P0190	ST62P0190		ST64P0185	
	210	ST60P0210	ST61P0210	ST62P0210			
	250	ST60P0250	ST61P0250	ST62P0250		ST64P0240	
	270	ST60P0270	ST61P0270	ST62P0270			
	330	ST60P0330	ST61P0330	ST62P0330			
	400	ST60P0400	ST61P0400	ST62P0400			
	500	ST60P0500	ST61P0500	ST62P0500		ST64P0500	
	400 x 400	ST60F4040	*				ST67F4040C ST67F4040D *
	420 x 520	ST60F4252C ST60F4252	*		ST63F4252	*	
	450 x 450	ST60F4545C	ST61F4545D	*			
	460 x 570	ST60F4657	ST61F4657C				
	500 x 500	ST60F5050C ST60F5050D	* ST61F5050D	* ST62F5050C ST62F5050D	*		
	520 x 520	ST60F5252C ST60F5252	*	ST62F5252D	*		
	580 x 580	ST60F5858C ST60F5858D	* ST61F5858C ST61F5858D	* ST62F5858C ST62F5858D	*	ST64F5858D	* ST67F5858D *
	600 x 600	ST60F6060C ST60F6060D	*	ST62F6060D	*		

## Packing information:

All packs contain 100 units  
 \* pack of 500  
 \*\* pack of 50  
 Other sizes upon request



## Applications



These grades are made with high purity cotton linters fibres and cellulose fibres (ash content of 0.06%). The qualitative filter papers allow to determinate with a great precision the nature of the filtered solutions and to check the composition of the samples. They offer better resistance to chemicals and moisture compared to standard filters and thus can be used for food, beverages, environmental analysis (air, soil...).

filtraTECH's grades: **QL01** | **QL02** | **QL03** | **QL04** | **QL05** | **QL08**



	Weight (g/m <sup>2</sup> ) DIN 53104	Thickness (mm)	Pore size (µm)	Filtration speed (sec) DIN 53137	Burst strength (kg/cm <sup>2</sup> )
<b>QL01</b> // Whatman : 4	<i>Very fast filtration qualitative filter paper</i>				
	80	0.21	15-20	10	>20
<b>QL02</b> // Whatman : 597	<i>Fast filtration qualitative filter paper</i>				
	88	0.18	12-15	20	>20
<b>QL03</b> // Whatman : 2	<i>Medium filtration qualitative filter paper</i>				
	87	0.18	8-12	50	>30
<b>QL04</b> // Whatman : 6	<i>Slow filtration qualitative filter paper</i>				
	80	0.16	4-7	100	>20
<b>QL05</b> // Whatman : 5	<i>Very slow filtration qualitative filter paper</i>				
	80	0.16	2-4	200	>20
<b>QL08</b>	<i>Very slow filtration qualitative filter paper</i>				
	100	0.19	1-3	300	>20



# Item codes

	Size (mm)	QL01	QL02	QL03	QL04	QL05	QL08
A	45	QL01A0045	QL02A0045	QL03A0045	QL04A0045		
	47	QL01A0047	QL02A0047	QL03A0047	QL04A0047	QL05A0047	
	55	QL01A0055	QL02A0055	QL03A0055	QL04A0055	QL05A0055	
	70	QL01A0070	QL02A0070	QL03A0070	QL04A0070	QL05A0070	QL08A0070
	90	QL01A0090	QL02A0090	QL03A0090	QL04A0090	QL05A0090	QL08A0090
	110	QL01A0110	QL02A0110	QL03A0110	QL04A0110	QL05A0110	QL08A0110
	125	QL01A0125	QL02A0125	QL03A0125	QL04A0125	QL05A0125	QL08A0125
	150	QL01A0150	QL02A0150	QL03A0150	QL04A0150	QL05A0150	QL08A0150
	185	QL01A0185	QL02A0185	QL03A0185	QL04A0185	QL05A0185	QL08A0185
	210	QL01A0210	QL02A0210	QL03A0210	QL04A0210	QL05A0210	
	240	QL01A0240	QL02A0240	QL03A0240	QL04A0240	QL05A0240	QL08A0240
	270	QL01A0270	QL02A0270	QL03A0270	QL04A0270	QL05A0270	
	320	QL01A0320	QL02A0320	QL03A0320	QL04A0320	QL05A0320	
	400	QL01A0400	QL02A0400	QL03A0400	QL04A0400	QL05A0400	
	500	QL01A0500	QL02A0500	QL03A0500	QL04A0500	QL05A0500	
P	70	QL01P0070	QL02P0070	QL03P0070	QL04P0070	QL05P0070	
	90	QL01P0090	QL02P0090	QL03P0090	QL04P0090	QL05P0090	
	110	QL01P0110	QL02P0110	QL03P0110	QL04P0110	QL05P0110	
	125	QL01P0125	QL02P0125	QL03P0125	QL04P0125	QL05P0125	QL08P0125
	150	QL01P0150	QL02P0150	QL03P0150	QL04P0150	QL05P0150	QL08P0150
	185	QL01P0185	QL02P0185	QL03P0185	QL04P0185	QL05P0185	QL08P0185
	210	QL01P0210	QL02P0210	QL03P0210	QL04P0210	QL05P0210	
	240	QL01P0240	QL02P0240	QL03P0240	QL04P0240	QL05P0240	QL08P0240
	270	QL01P0270	QL02P0270	QL03P0270	QL04P0270	QL05P0270	
	320	QL01P0320	QL02P0320	QL03P0320	QL04P0320	QL05P0320	
	400	QL01P0400	QL02P0400	QL03P0400	QL04P0400	QL05P0400	QL08P0400
	500	QL01P0500	QL02P0500	QL03P0500	QL04P0500	QL05P0500	QL08P0500
F	460 x 570	QL01F4657	QL02F4657	QL03F4657	QL04F4657	QL05F4657	
	580 x 580	QL01F5858	QL02F5858	QL03F5858	QL04F5858	QL05F5858	

**Packing information:**  
All packs contain 100 units  
Other sizes upon request





# **QUANTITATIVE ANALYTICAL FILTERS**

## Applications



The quantitative or ashless filter papers are made with 100% high quality cotton linter fibres and alpha-cellulose fibres, which go through a severe chemical process. They have been washed out with a specific acid treatment and finally washed from impurities with demineralized water.

This process allows reaching an ash content below 0.01%. These papers are used to count during demanding analysis.

filtraTECH's grades: **QT41** | **QT42** | **QT43** | **QT44** | **QT45** | **QT46**



		Weight (g/m <sup>2</sup> ) DIN 53104	Thickness (mm)	Pore size (µm)	Filtration speed (sec) DIN 53137
<b>QT41</b> // Whatman : 41	<i>Very fast filtration quantitative filter paper</i>				
	●	80	0.2	25-30	9
<b>QT42</b> // Whatman : 43	<i>Fast filtration quantitative filter paper</i>				
	○	84	0.2	20-25	27
<b>QT43</b> // Whatman : 40	<i>Medium filtration quantitative filter paper</i>				
	●	84	0.20	14-18	55
<b>QT44</b> // Whatman : 44	<i>Slow filtration quantitative filter paper</i>				
	●	74	0.16	7-9	100
<b>QT45</b> // Whatman : 42	<i>Very slow filtration quantitative filter paper</i>				
	●	84	0.17	2-4	140
<b>QT46</b>	<i>Thick, very slow filtration quantitative filter paper</i>				
	●	100	0.2	2-3	195



# Item codes

	Size (mm)	QT41	QT42	QT43	QT44	QT45	QT46
A	12.7	QT41A0013M *	QT42A0013M *	QT43A0013M *	QT44A0013M *	QT45A0013M *	
	45	QT41A0045	QT42A0045	QT43A0045	QT44A0045	QT45A0045	
	47	QT41A0047	QT42A0047	QT43A0047	QT44A0047	QT45A0047	
	55	QT41A0055	QT42A0055	QT43A0055	QT44A0055	QT45A0055	QT46A0055
	70	QT41A0070	QT42A0070	QT43A0070	QT44A0070	QT45A0070	QT46A0070
	90	QT41A0090	QT42A0090	QT43A0090	QT44A0090	QT45A0090	QT46A0090
	110	QT41A0110	QT42A0110	QT43A0110	QT44A0110	QT45A0110	QT46A0110
	125	QT41A0125	QT42A0125	QT43A0125	QT44A0125	QT45A0125	QT46A0125
	135	QT41A0135	QT42A0135	QT43A0135	QT44A0135	QT45A0135	
	150	QT41A0150	QT42A0150	QT43A0150	QT44A0150	QT45A0150	QT46A0150
	185	QT41A0185	QT42A0185	QT43A0185	QT44A0185	QT45A0185	QT46A0185
	210	QT41A0210	QT42A0210	QT43A0210	QT44A0210	QT45A0210	
	240	QT41A0240	QT42A0240	QT43A0240	QT44A0240	QT45A0240	QT46A0240
	320	QT41A0320	QT42A0320	QT43A0320	QT44A0320	QT45A0320	
P	70	QT41P0070	QT42P0070	QT43P0070	QT44P0070	QT45P0070	
	90	QT41P0090	QT42P0090	QT43P0090	QT44P0090	QT45P0090	
	110	QT41P0110	QT42P0110	QT43P0110	QT44P0110	QT45P0110	
	125	QT41P0125	QT42P0125	QT43P0125	QT44P0125	QT45P0125	
	150	QT41P0150	QT42P0150	QT43P0150	QT44P0150	QT45P0150	
	185	QT41P0185	QT42P0185	QT43P0185	QT44P0185	QT45P0185	
	240	QT41P0240	QT42P0240	QT43P0240	QT44P0240	QT45P0240	
	320	QT41P0320	QT42P0320	QT43P0320	QT44P0320	QT45P0320	
F	580 x 580	QT41F5858C	QT42F5858C	QT43F5858C	QT44F5858C	QT45F5858C	

## Packing information:

All packs contain 100 units

\* pack of 1000

Other sizes upon request








# Quantitative filters for specific applications



## Applications

With additional chemical treatment, some grades of quantitative filter paper are modified and can be used for very specific applications.

filtraTECH's grades: **QT48** | **QT49**

		Weight (g/m <sup>2</sup> ) DIN 53104	Thickness (mm)	Pore size (µm)	Filtration speed (sec) DIN 53137
<b>QT48</b>	<i>Magnesium-free filter paper, recommended for soil analysis</i>				
		80	0.2	6-8	150
<b>QT49</b> // Whatman : 589/4	<i>Fast filtration quantitative filter paper, low fat content Recommended for determination of grease content in dairy products (milk, cheese)</i>				
		82	0.17	8-12	20




# Strengthened ashless filter



## Applications

The strengthened range of quantitative filter papers is produced according to the same demanding process as the other grades but offers a better resistance when wet. The strengthened ashless filters are recommended for gravimetric analysis of samples or precipitates' collection.

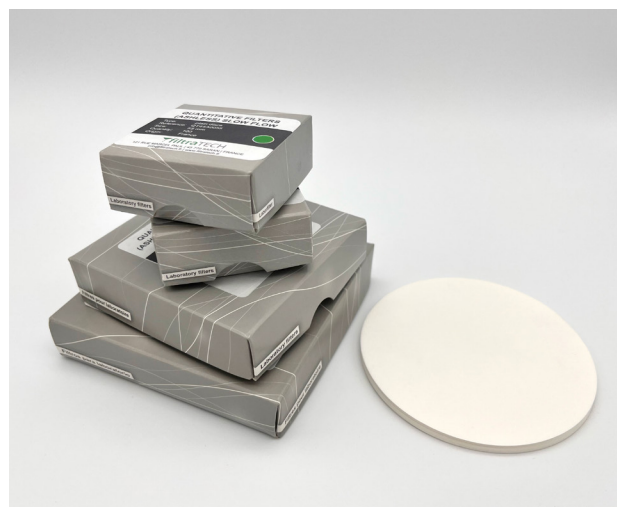
filtraTECH's grades: **QT51** | **QT53** | **QT55**

		Weight (g/m <sup>2</sup> ) DIN 53104	Thickness (mm)	Pore size (µm)	Filtration speed (sec) DIN 53137
<b>QT51</b> // Whatman : 541	<i>Strengthened very fast filtration quantitative filter paper</i>				
		84	0.2	25-30	9
<b>QT53</b> // Whatman : 540	<i>Strengthened medium filtration quantitative filter paper</i>				
		84	0.2	14-18	55
<b>QT55</b> // Whatman : 542	<i>Strengthened very slow filtration quantitative filter paper</i>				
		84	0.17	2-4	195



# Item codes

	Size (mm)	QT48	QT49
A	55		QT49A0055
	70		QT49A0070
	90		QT49A0090
	110		QT49A0110
	125		QT49A0125
	150	QT48A0150	QT49A0150
	185		QT49A0185
	240		QT49A0240



P	125		QT49P0125
	150		QT49P0150
	185		QT49P0185
	240		QT49P0240

	Size (mm)	QT51	QT53	QT55
A	47	QT51A0047		
	55	QT51A0055	QT53A0055	QT55A0055
	70	QT51A0070	QT53A0070	QT55A0070
	90	QT51A0090	QT53A0090	QT55A0090
	110	QT51A0110	QT53A0110	QT55A0110
	125	QT51A0125	QT53A0125	QT55A0125
	140	QT51A0140		
	150	QT51A0150	QT53A0150	QT55A0150
	185	QT51A0185	QT53A0185	QT55A0185
	240	QT51A0240	QT53A0240	QT55A0240



P	125	QT51P0125	QT53P0125	QT55P0125
	150	QT51P0150	QT53P0150	QT55P0150
	185	QT51P0185	QT53P0185	QT55P0185
	240	QT51P0240	QT53P0240	QT55P0240

## Packing information:

All packs contain 100 units  
Other sizes upon request



## Glass microfiber filter without binder

### Applications



Made with 100% borosilicated microglass fibers, these filters offer an excellent level of very small particles retention (up to 0.7  $\mu\text{m}$ ) and a large loading capacity. They are particularly suitable for microfiltration of air, gases and liquids as they resist to 500 °C and are compatible to most solvents and reagents (except hydrofluoric acid).

filtraTECH's grades: **FV21** | **FV22** | **FV23** | **FV24** | **FV25** | **FV26** | **FV28** | **FV31** | **FV32**

	Weight (g/m <sup>2</sup> ) DIN 53104	Thickness (mm)	Pore size ( $\mu\text{m}$ )	Filtration speed (sec) DIN 53137	Burst strength (kPa)
<b>FV21</b> // Whatman : GF/A	Air pollution analysis				
	52	0.26	1.6	60	20
<b>FV22</b> // Whatman : GF/B	Water analysis				
	143	0.70	1	200	50
<b>FV23</b> // Whatman : GF/C	Suspended solid analysis				
	52	0.26	1.2	100	20
<b>FV24</b> // Whatman : GF/D	Pre-filtration for membranes				
	120	0.53	2.7	30	20
<b>FV25</b> // Whatman : GF/F	Very small particle filtration				
	75	0.45	0.7	310	50
<b>FV26</b> // Whatman : 934 AH	Water control				
	65	0.28	1.5	60	50
<b>FV28</b>	Prefiltration for membranes				
	264	1.6	3.5	-	-
<b>FV31</b>	Battery separation				
	509	3.5	4	-	-
<b>FV32</b>	Filtration of coarses particles				
	162	1.06	8	-	-



# Item codes

Size (mm)	FV21	FV22	FV23	FV24	FV25	FV26
A	21	FV21A0021		FV23A0021		FV25A0021 FV26A0021
	24	FV21A0024	FV22A0024 *	FV23A0024		FV25A0024 FV26A0024
	25	FV21A0025	FV22A0025 *	FV23A0025	FV24A0025 *	FV25A0025 FV26A0025
	37	FV21A0037	FV22A0037 *	FV23A0037		FV25A0037 FV26A0037
	42.5	FV21A0042	FV22A0042 *	FV23A0042		FV25A0042
	47	FV21A0047	FV22A0047 *	FV23A0047	FV24A0047 *	FV25A0047 FV26A0047
	50	FV21A0050	FV22A0050 *	FV23A0050		FV26A0050
	55	FV21A0055	FV22A0055 *	FV23A0055	FV24A0055 *	FV25A0055 FV26A0055
	60	FV21A0060		FV23A0060		
	70	FV21A0070	FV22A0070 *	FV23A0070	FV24A0070 *	FV25A0070 FV26A0070
	90	FV21A0090	FV22A0090 *	FV23A0090	FV24A0090 *	FV25A0090 * FV26A0090
	100			FV23A0100		FV25A0100 * FV26A0100
	110	FV21A0110	FV22A0110 **	FV23A0110	FV24A0110 **	FV25A0110 * FV26A0110
	125	FV21A0125	FV22A0125 **	FV23A0125	FV24A0125 **	FV25A0125 * FV26A0125
	150	FV21A0150	FV22A0150 **	FV23A0150	FV24A0150 **	FV25A0150 * FV26A0150
	185	FV21A0185 *	FV22A0185 **	FV23A0185 *		FV25A0185 *
	240	FV21A0240 *	FV22A0240 **	FV23A0240 *	FV24A0240 **	FV25A0240 *
F	60 x 90				FV25F0609	FV26F0609
	80 x 115			FV23F0811C		
	203 x 254	FV21F2025	FV22F2025 **			FV26F2025 *
	460 x 570	FV21F4657 **		FV23F4657 **		

## FV28 - FV31 - FV32

All sizes and packing upon request

### Packing information:

All packs contain 100 units

\* pack of 50

\*\* pack of 25

Other sizes upon request







## Glass microfiber filter with binder

### Applications



The glass microfiber filters with binder have a lower resistance to temperature (up to 180 °C maximum). The hydrophobic grade [FV27] is suitable for air and gas analysis. At the opposite, the hydrophilic grade [FV29] is adapted to liquid.

Binder: resin

filtraTECH's grades: **FV27** | **FV29**

	Weight (g/m <sup>2</sup> ) DIN 53104	Thickness (mm)	Property	Retention efficiency (%) for 0.3 µm	Retention (µm)
<b>FV27</b> // Whatman : GF10	Air pollution and exhaust fume control / weighing pads				
	73	0.40	Hydrophobic	99.9	-
<b>FV29</b> // Whatman : GF6	Gravimetric analysis / weighing pads				
	73	0.35	Hydrophilic	-	0.6

## Quartz microfiber

### Applications



The quartz microfiber filters offer the same technical specifications as glass microfiber filters without binder, except for the higher temperature resistance (up to 900 °C). They are ideally suitable for the monitoring of suspended lead particles in air, emission of chimney smokes or any other acid solution.

filtraTECH's grade: **FQ30**

	Weight (g/m <sup>2</sup> ) DIN 53104	Thickness (mm)	Pore size (µm)	Filtration speed (sec) DIN 53137	Retention efficiency (%)
<b>FQ30</b> // Whatman : QM/A	Highest temperature analysis, lead particles in air				
	85	0.43	1.5	60	99.999
Heavy metals traces (ppm)	<b>As</b>	<b>Pb</b>	<b>Ni</b>	<b>Cd</b>	
	0.75	0.75	2	1.5	



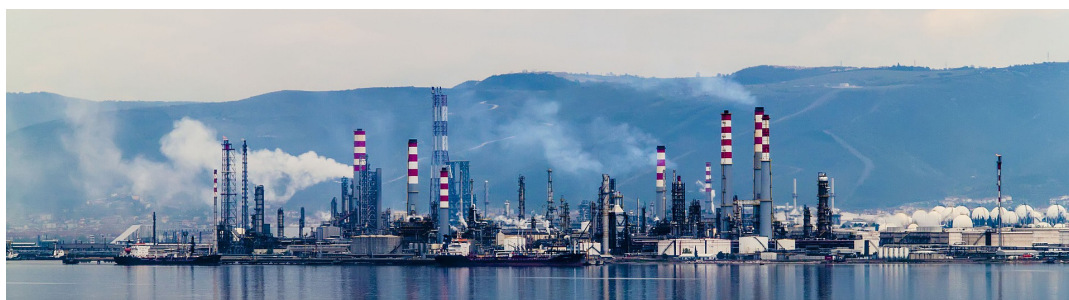
# Item codes

	Size (mm)	FV27	FV29	
A	25	FV27A0025	FV29A0025	
	47	FV27A0047	FV29A0047	
	55	FV27A0055	FV29A0055	
	70	FV27A0070	FV29A0070	
	90	FV27A0090	FV29A0090	
		FV27A0090C *	FV29A0090C *	
	100		FV29A0100	
	110	FV27A0110	FV29A0110	
	125	FV27A0125	FV29A0125	
	150	FV27A0150	FV29A0150	
F	100 x 100		FV29F1010	*
R	I = 50 mm x L = 100 m	FV27R0050	**	

**Packing information:**  
All packs contain 50 units  
\* pack of 100  
\*\* roll sold individually  
Other sizes upon request

	Size (mm)	FQ30	
A	25	FQ30A0025	
	37	FQ30A0037	
	45	FQ30A0045	
	47	FQ30A0047	
	50	FQ30A0050	
	70	FQ30A0070	
	90	FQ30A0090	
	110	FQ30A0110	
	125	FQ30A0125	
	150	FQ30A0150	
F	203 x 254	FQ30F2025	*

**Packing information:**  
All packs contain 50 units  
\* pack of 25  
Other sizes upon request





# SPECIAL PAPERS AND OTHER LABORATORY CONSUMMABLES

## Bench protective paper

### Applications



The bench protective papers are made with an absorbent paper on one side and with a PE-coated film on the other. These papers give a good protection of laboratory benches against impacts, acids, toxic, corrosive and radioactive fluids.

filtraTECH's grades: **PP125** | **PP210** | **PP400**



	Cellulose	PE film	Absorption capacity (ml/m <sup>2</sup> )
	Weight (g/m <sup>2</sup> )		
<b>PP125</b> // Whatman : Benchkote	100	25	240
<b>PP210</b>	190	35	410
<b>PP400</b> // Whatman : Benchkote Plus	375	20	750

	Size (mm)	PP125	PP210	PP400
	<b>420 x 520</b>	PP125F4252 *		
	<b>460 x 570</b>	PP125F4657 *		
		PP125F4657L	PP210F4657	PP400F4657
	<b>500 x 600</b>	PP125F5060 *	PP210F5060	
	<b>400</b>	PP125R0400		
	<b>460</b>	PP125R0460	PP210R0460	
	<b>490</b>	PP125R0490	PP210R0490	
	<b>600</b>	PP125R0600	PP210R0600	
	<b>920</b>	PP125R0920	PP210R0920	

**Packing information:**  
All packs contain 50 units  
\* pack of 100  
Roll of 50 m  
Other sizes upon request



# Joseph paper

## Applications



The Joseph paper is non fluffy and absorbent; it is ideal for cleaning and drying glass containers, tubes, flasks, microscopic plates, bottles in laboratories or hospitals.

filtraTECH's grade: **PJ**



	Size (mm)	PJ	Sheets
	120 x 120	PJ500F1212	500
	150 x 150	PJ200F1515	200
		PJ500F1515	500
	350 x 500	PJ500F3550	500
		PJ800F3550	800

	Size (mm)	PJ	Sheets
	350 x 500	PJ25M3550	25
		PJ40M3550	40
		PJ50M3550	50
		PJ100M3550	100
		PJ500M3550	500
		PJ800M3550	800

# Cleaning paper

## Applications



**Food use:** Pure wadding, high quality, white, conform to food industry norms, 19 g/m<sup>2</sup>

**Standard use:** Standard wadding, unbleached colour, suitable to most common applications, 19 g/m<sup>2</sup>

**Industrial use:** Recycled wadding, orange/brown colour economical, more resistant, used in industrial fields, 22 g/m<sup>2</sup>

filtraTECH's item : **ES**

	Size (mm)	ES	Sheets	Rolls
Food	215 x 250	ES045R2125A	500	6
	200 x 300	ES100R2530A	1000	2
Standard	200 x 300	ES045R2235S	450	6
	250 x 300	ES100R2530S	1000	2
		ES150R2530S	1500	2
Industrial	250 x 300	ES100R2530I	1000	2
		ES150R2530I	1500	2



# Holder for cleaning paper

## Applications

Depending on your needs, 2 holders in white gloss finished steel with cutting system are available for rolls (maximum width: 30 cm)

filtraTECH's item: **SUP**

	SUP
Stand holder	SUPPIED
Wall holder	SUPMURAL







# Lens cleaning tissue



## Applications

The lens cleaning tissue is made with 100% Manila fibers. It does not scratch and is not fluffy. It is used for the cleaning of optical lens (objective, microscope, binoculars), glasses, and optical fiber filaments.

filtraTECH's grades: **OP12** | **OP13**

	Weight (g/m <sup>2</sup> ) DIN 53104	Use
<b>OP12</b>	12	Economical version
<b>OP13</b> // Whatman: 105	13	Premium grade, more resistant

	Size (mm)	OP12	Sheets	OP13	Sheets
	100 x 150	OP12F1015	100	OP13F1015	100
	135 x 170	OP12F1317	500	OP13F1317	500
	135 x 190	OP12F1319	500		
	200 x 300	OP12F2030	100		
	460 x 570	OP12F4657	500		
	600 x 600	OP12F6060D	500		
	80 x 100	OP12L0810	25	OP13L0810L	50
	95 x 135	OP12L0913	25	OP13L0913L	50
	100 x 150	OP12L1015B	25 x 25	OP13L1015L	50



# Blotting pad

## Applications



Made with a very absorbent paper, the blotting pads (73 g/m<sup>2</sup>) are perfect to dry excessive liquids in microscopic preparations.

filtraTECH's grade: **SL73**



	Weight (g/m <sup>2</sup> ) DIN 53104	Thickness (mm)
<b>SL73</b>	73	0.17

	Size (mm)	SL73	Sheets
	37 x 100	SL73L0310	50



# Weighing paper

## Applications

The weighing papers have a satin surface and are used to weigh all types of substances (beet mash, powders, liquids,...).

filtraTECH's grades : **PE25** | **PE45**

	Weight (g/m <sup>2</sup> ) DIN 53104	Application	Property
<b>PE25</b>	25	grated beet weighing	easily crushable
<b>PE45</b>	45	liquid samples	wet-strength resistance

Size (mm)	PE25	PE45
70 x 70	PE25F0707 **	
76 x 76		PE45F0707D *
95 x 110		PE45F0911
100 x 100		PE45F1010
	PE25F1010 **	PE45F1010D *
		PE45F1010M **
120 x 120		PE45F1212
150 x 150		PE45F1515
		PE45F1515D *

### Packing information:

All packs contain 250 units

\* pack of 500

\*\* pack of 1000

Other sizes upon request

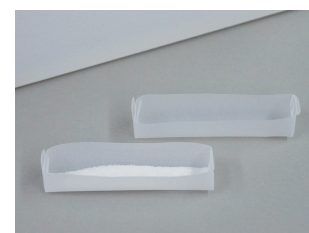


# Weighing boat

## Applications

Made in parchment paper with a low nitrogen content, the weighing boats enable to weigh and transport easily various substances such as viscous products, pasty products or powders. Available in boxes of 100 units of 58x10x10 mm.

filtraTECH's item: **NP581010**



# Aluminium weighing plate

## Applications

These aluminum cups are suitable for weighing powders, for distribution, for storage and for determining the humidity in a desiccator.

filtraTECH's grade: **NPA**

Size (mm)	Height (mm)	NPA
56	8	NPA0056C
72		NPA0072C
93		NPA0093C

### Packing information:

All packs contain 100 units







# Phase separating paper

## Applications



The phase separating paper is a hydrophobic paper made with silicone impregnation used for the separation of aqueous solutions from organic solutions. It allows a quick separation of elements and replaces the use of a separating funnel.

filtraTECH's grade: **FS92**

	Weight (g/m <sup>2</sup> )	Thickness (mm)	Filtration speed (sec)		Size (mm)	FS92
<b>FS92</b> // Whatman: 1PS	85	0.17	25		<b>70</b>	FS92A0070
					<b>90</b>	FS92A0090
					<b>110</b>	FS92A0110
					<b>125</b>	FS92A0125
					<b>150</b>	FS92A0150
					<b>185</b>	FS92A0185
					<b>210</b>	FS92A0210
					<b>240</b>	FS92A0240
					<b>185</b>	FS92P0185



**Packing information:**  
All packs contain 100 units  
Other sizes upon request

# Phosphate-free filter paper

## Applications



In order to preserve the results of soil analysis from phosphate contamination issued from the paper itself, we suggest you use phosphate-free filter paper.

2 grades are available for the determination of potassium and phosphate levels (Egner, Riehm & Lederle method), sugar ratio post-determination or filtration of fine crystalline sulphide precipitates in the analysis of iron.

filtraTECH's grades: **FS93 | FS94**

	Weight (g/m <sup>2</sup> ) DIN 53104	Thickness (mm)	Pore size (µm)	Filtration speed (sec) DIN 53137
<b>FS93</b>	<i>Medium / fast flow</i>			
	85	0.2	8-12	22
<b>FS94</b> // Whatman: 512	<i>Very slow flow</i>			
	76	0.16	2-3	200

**Packing information:**  
All sizes upon request



# Nitrogen-free filter paper

## Applications



These filters contain a very low level of nitrogen and offer a slow filtration speed. They are suitable for the determination of the nitrogen content in steel and iron rough, or even glycaemia according to Hagedorn-Jensen.

filtraTECH's grade: **FS96**

	Weight (g/m <sup>2</sup> ) DIN 53104	Thickness (mm)	Filtration speed (sec)	Nitrogen content
<b>FS96</b> // Whatman : 2095	85	0.17	100	≈ 0.05 mg / ø disc 110 mm

Size (mm)	FS96	Size (mm)	FS96	Size (mm)	FS96
<b>90</b>	FS96A0090	<b>125</b>	FS96P0125	<b>100 x 100</b>	FS96F1010
<b>110</b>	FS96A0110	<b>150</b>	FS96P0150	<b>120 x 120</b>	FS96F1212
<b>125</b>	FS96A0125	<b>190</b>	FS96P0190	<b>200 x 200</b>	FS96F2020
<b>150</b>	FS96A0150				

**Packing information:**  
All packs contain 100 units  
Other sizes upon request

# Black filter paper

## Applications



This filter paper is made with the addition of black dye and used to reveal the white and light particles by contrast such as fluorine, silicon detection, mycelium in cultivated mushrooms...

filtraTECH's grade: **FS98**

	Weight (g/m <sup>2</sup> ) DIN 53104	Thickness (mm)	Filtration speed (sec)	Size (mm)	FS98
<b>FS98</b> // Whatman : 551	85	0.17	45	<b>70</b>	FS98A0070
				<b>90</b>	FS98A0090
				<b>110</b>	FS98A0110
				<b>125</b>	FS98A0125
				<b>150</b>	FS98A0150
				<b>185</b>	FS98A0185



**Packing information:**  
All packs contain 100 units  
Other sizes upon request





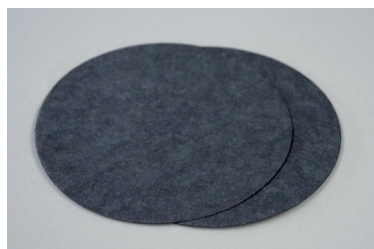
# Activated carbon filter paper

## Applications



This paper contains about 35% of high quality activated carbon and it is recommended for a use in various fields in both laboratories (clarification and brightening of duff and dark urines) and in industry (filtration of galvanic baths, clarification of coloured liquids, odor absorption).

filtraTECH's grade: **FS99**



	Weight (g/m <sup>2</sup> ) DIN 53104	Thickness (mm)	Filtration speed (sec)
<b>FS99</b> // Whatman : 508	155	0.35	60

	Size (mm)	FS99
	55	FS99A0055
	70	FS99A0070
	90	FS99A0090
	110	FS99A0110
	125	FS99A0125
	140	FS99A0140
	150	FS99A0150
	185	FS99A0185
	210	FS99A0210
	240	FS99A0240

	Size (mm)	FS99
	195 hole: 61	FS99A195/61
	258 hole: 40	FS99A258/40
	456 hole: 100	FS99A456/100

	Size (mm)	FS99
	600 x 600	FS99F6060

**Packing information:**  
All packs contain 100 units  
Other sizes upon request

# Brewery industry filter paper

## Applications



This embossed filter paper is suitable for analytical methods in breweries according EBC procedures (European Brewery Convention) and for sample preparation for extract determination of malt.

filtraTECH's grade: **FS97**

	Weight (g/m <sup>2</sup> ) DIN 53104	Thickness (mm)	Filtration speed (sec)
<b>FS97</b> // Whatman : 2555	75	0.17	15



	Size (mm)	FS97
	150	FS97A0150
	185	FS97A0185
	240	FS97A0240

	Size (mm)	FS97
	240	FS97P0240
	270	FS97P0270
	320	FS97P0320

**Packing information:**  
All packs contain 100 units  
Other sizes upon request



# Test seed paper

## Applications



Due to their absorbent power, the seed papers are used to control the germination of seed samples because they retain enough water and they prevent the penetration of the roots in the paper.

These papers are made from the highest quality of wood fibres to avoid any contact with toxic parts (bacteria, sporis...).

filtraTECH's grades: **PG110 | PG120 | PG155 | PG160 | PG300**

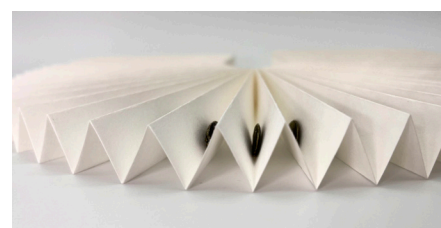
There are 3 application methods:

**TP:** top of paper

**BP:** between paper (2 layers)

**PP:** pleated paper

	Colour	Weight (g/m <sup>2</sup> ) DIN 53104	Thickness (mm)	Method	Aspect
<b>PG110</b> // Whatman: 3236	●	110	0.22	<b>PP</b>	Smooth
<b>PG120</b> // Whatman: 3014	○	120	0.22	<b>PP / TP</b>	Smooth
<b>PG155</b> // Whatman: 520B	○	155	0.55	<b>BP</b>	Creped
<b>PG160</b> // Whatman: 3024	○	160	0.38	<b>TP</b>	Smooth
<b>PG300</b> // Whatman: 3644	●	300	0.65	<b>TP</b>	Smooth



	Size (mm)	PG110	PG120	PG155	PG160	PG300
	90		PG120A0090D 500		PG160A0090 100	
	110		PG120A0110D 500			
	110 x 20 x 2000	PG110P110M 1000	PG120P110/32 32 PG120P110M 1000			
	80 x 100					PG300F0810B 100
	85 x 120				PG160F0812D 500	
	105 x 155				PG160F1015 100	
	320 x 370				PG160F3237 100	
	600 x 600			PG155F6060 100	PG160F6060 100	

**Packing information:**  
Other sizes upon request





# Sugar industry filter paper

## Applications



Usable in the food industry, the filter papers for the sugar industry offer a fast filtration or a very fast filtration for the clarification of beetroot juice or cane sugar juice (for efficient saccharimetric tests or after lead acetate addition).

filtraTECH's grades: **FS90** | **FS91**



	Weight (g/m <sup>2</sup> )	Aspect	Filtration speed	Application
<b>FS90</b> // Whatman : 3002	64	Smooth	very fast	beetroot juice clarification
<b>FS91</b> // Whatman : 91	64	Creped	fast	sugar cane juice clarification

	Size (mm)	FS90	FS91
	110		FS91A0110
	125		FS91A0125
	140		FS91A0140
	150		FS91A0150
	185		FS91A0185
			FS91A0185D **
	240		FS91A0240
			FS91A0240D **

	185		FS91P0185
	240		FS91P0240

	Size (mm)	FS90	FS91
	210	FS90C0210 *	
	215	FS90C0215 *	
	225	FS90C0225 *	
	250	FS90C0250 *	
	580 x 580	FS90F5858D **	FS91F5858D **
	600 x 600	FS90F6060D **	

### Packing information:

All packs contain 100 units

\* pack of 250

\*\* pack of 500

Other sizes upon request



# Non woven filter & filter card

## Applications



The non woven filters of our range can be used for sediment determination in dairy products (food contact approved). They come in different sizes and shapes depending on market habits.

filtraTECH's grades: **NT110** | **NT130**

	Weight (g/m <sup>2</sup> )	Thickness (mm)	Pore size (μm)	Water permeability (L/m <sup>2</sup> /min)	Air permeability (L/m <sup>2</sup> /min)
<b>NT110</b>	110	0.70	50	400	2200
<b>NT130</b> // Whatman : 0048	130	1.20	45	370	1750



	Size (mm)	NT110	NT130
	32	NT110A0032	NT130A0032
	35	NT110A0035	
	47	NT110A0047	NT130A0047
	50 x 50	NT110F0505	* NT130F0505 *

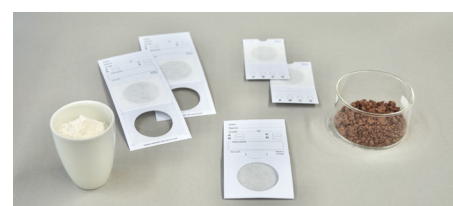
### Packing information:

All packs contain 1000 units  
\* pack of 500 units

## Applications

The filter cards (NT110 non woven filter stuck on a printed cardboard for archives) are used in food industry laboratories, among others in milk powder analysis.

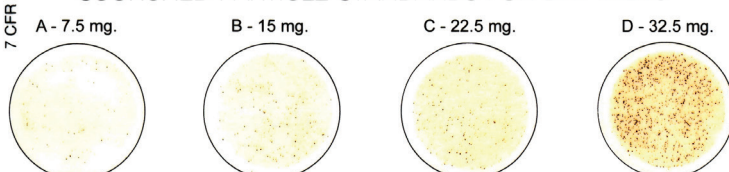
filtraTECH's grade: **CF110**



### CHART OF RESULT INTERPRETATION (weight of scorched particles in milk powder)

7 CFR 58.2676

#### American Dairy Products Institute SCORCHED PARTICLE STANDARDS FOR DRY MILKS



	Size (mm)	CF110
determination of sediments in milk powder, dairy products	45 x 80	CF110N4580
determination of scorched particles in milk powder according to ADMI method	57 x 155	CF110N57155

### Packing information:

All packs contain 500 units





## Antibiotic assays

### Applications



Made with 100% cotton linters, this very absorbent paper is suitable to identify the agents which are the cause of infectious diseases and to test the resistance of pathogenic organisms.

filtraTECH's grade: **PA320**



	Weight (g/m <sup>2</sup> ) DIN 53104	Thickness (mm)		Size (mm)	PA320
<b>PA320</b> // Whatman : AA	270	0.7		6	PA320A0006
				9	PA320A0009
				12.7	PA320A0013
				25	PA320A0025

**Packing information:**  
All packs contain 1000 units  
Other sizes upon request

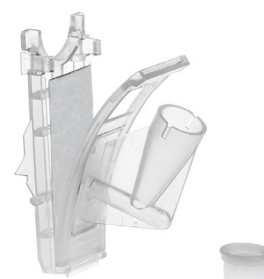
## Cyto-centrifugal paper

### Applications



This blotting is used to absorb the liquid remaining from the staining of the sample from the cytoslides in analysis with Shandon and Bayer cytological centrifuges.

filtraTECH's grade: **CY430**



	Weight (g/m <sup>2</sup> ) DIN 53104	Thickness (mm)	Absorption (ml/cm <sup>2</sup> )		Size (mm)	Nb holes	CY430
<b>CY430</b>	430	0.9	6.8		25 x 62	1	CY430F2562/1T
					25 x 77	2	CY430F2577/2T

**Packing information:**  
All packs contain 200 units  
Other sizes upon request

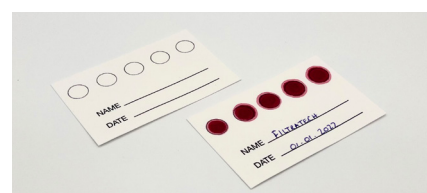
## Specimen collection paper

### Applications



This paper is manufactured with high quality cellulose (pure cotton linters) and used for blood sample collection and newborn screening.

filtraTECH's grade: **BSC**



	Weight (g/m <sup>2</sup> ) DIN 53104	Thickness (mm)	Water asorption (g/100 cm <sup>2</sup> )
<b>BSC</b> // Whatman : 903	182	0.47	3.35

**Packing information:**  
The cards are customized by the requirements of the healthcare professionals.



# Sterilization paper



## Applications

According EN 868-2 norm, the sterilization paper (creped surface, 60 g/m<sup>2</sup>) is used to wrap medical clothes, surgical instruments and other articles that require steam, gas and gamma-ray sterilization.

filtraTECH's grade: **PS60**

	Weight (g/m <sup>2</sup> ) DIN 53104	Thickness (mm)	Cobb absorption (mm/10 min)	pH value	Air permeability (µm)
<b>PS60</b>	60	0.16	16-18	6.12	43



Size (mm)	PS60			
300 x 300	PS60F3030B	○	2000	
	PS60F5050B	○	500	
500 x 500	PS60F5050V	●		
	PS60F6060B	○	500	
600 x 600	PS60F6060V	●		
	PS60F6090B	○	500	
600 x 900	PS60F7575B	○	250	
	PS60F7575V	●		
750 x 750	PS60F9090B	○	250	
	PS60F9090V	●		
900 x 900	PS60F100100B	○	250	
	PS60F100100V	●		
1000 x 1000	PS60F120120B	○	100	

### Packing information:

Available in:  
white colour ○  
green colour ●  
Other sizes upon request

# Sterilization indicator tape

## Applications



This indicator tape will secure the sterilization of your instruments.

Dark lines will appear on the indicator tape if the sterilization was effective in the autoclave and can be removed from the machine. No need to wait any longer, you can take them out of the autoclave.

filtraTECH's item: **SIT019R050**

	Width (mm)	Length (m)	Colour	Colour after sterilization
<b>SIT</b>	19	50	light yellow lines	brown lines







# Chromatography

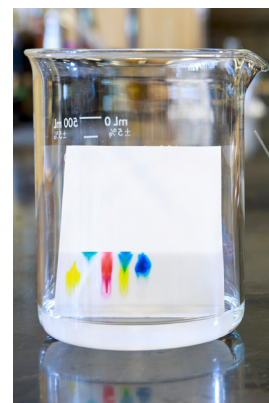
## Applications



Produced with high quality cotton linters with an  $\alpha$  cellulose content of 98 %, the chromatography papers allow absorbing samples more or less important depending on the thickness of the grade.

NB: the capillary rise is always higher in machine direction than cross direction.

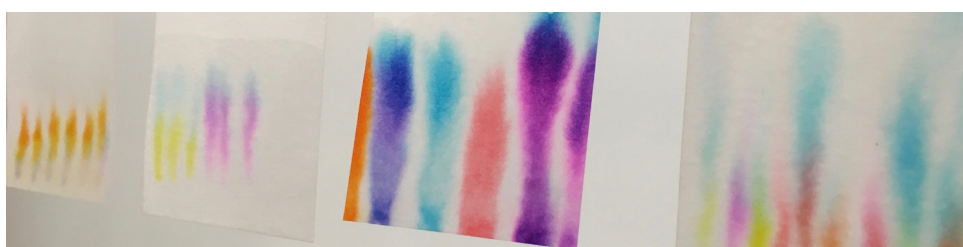
filtraTECH's grades: **CH51 | CH53 | CH54 | CH58 | CH59**



	Weight (g/m <sup>2</sup> ) DIN 53104	Thickness (mm)	Capillary rise (mm/30 min)
<b>CH51</b> // Whatman: 1CHR	<i>Routine works in chromatography, determination of the presence of malic acid in wine</i>		
	90	0.20	120-130
<b>CH53</b> // Whatman: 2CHR	<i>Finest analysis, determination of components by elution</i>		
	90	0.18	90-100
<b>CH54</b> // Whatman: 20CHR	<i>Separation of samples of unknown composition with outstanding resolution at low loadings</i>		
	140	0.28	90-100
<b>CH58</b> // Whatman: 3MMCHR	<i>Electrophoresis works, highly charged solution chromatography, separation of organic compounds, separation and identification of additives in food</i>		
	180	0.36	90-100
<b>CH59</b> // Whatman: 17CHR	<i>Electrophoresis of thicker particles, protein analysis in serums</i>		
	270	0.7	130-140

	Size (mm)	CH51	CH53	CH54	CH58	CH59
	100 x 300	CH51F1030				
	200 x 200	CH51F2020			CH58F2020	
	460 x 570	CH51F4657	CH53F4657	CH54F4657	CH58F4657	
	580 x 600	CH51F5860	CH53F5860	CH54F5860		CH59F5860 *
	L = 50	CH51R0050				

**Packing information:**  
All packs contain 100 units  
\* Pack of 25  
Roll : 100 meters





# Blotting paper

## Applications



The blotting papers are used for their great absorption qualities; they are suitable for the Cobb method (determination of water absorption in the production of sized paper) or for the pulp industry (sheet formation testing).

filtraTECH's grades: **PB190** | **PB255**

	Weight (g/m <sup>2</sup> )	Absorption (g/m <sup>2</sup> )
<b>PB190</b>	190	300
<b>PB255</b>	255	490



Size (mm)	PB190	PB255
<b>120 x 120</b>		PB255F1212
<b>150 x 150</b>	PB190F1515	PB255F1515
<b>150 x 300</b>	PB190F1530	
<b>160 x 160</b>		PB255F1616
<b>170 x 170</b>		PB255F1717
<b>200 x 200</b>	PB190F2020	PB255F2020
<b>220 x 220</b>	PB190F2222	PB255F2222
<b>250 x 250</b>	PB190F2525	PB255F2525
<b>250 x 300</b>	PB190F2530	PB255F2530
<b>300 x 300</b>		PB255F3030
<b>500 x 500</b>	PB190F5050	PB255F5050
<b>500 x 650</b>	PB190F5065	PB255F5065
<b>680 x 680</b>		PB255F6868
<b>250 x 1000</b>	PB190F25100	PB255F25100
<b>270 x 1000</b>	PB190F27100	PB255F27100



### Packing information:

All packs contain 100 units  
Other sizes upon request

# Printed circuit board control paper

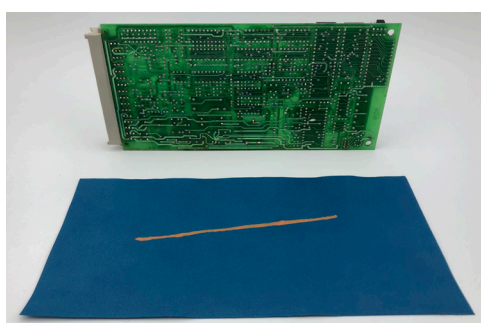
## Applications



During the electronic card cleaning process, the test paper is used to check that the fluid has been sprayed correctly on the entire card.

The paper thus turns from blue to yellow (indication of the areas of application of the acid on the printed circuit).

filtraTECH's item: **PH055**



Size (mm)	PH055
<b>254 x 300</b>	PH055F2530



### Packing information:

All packs contain 100 units  
Other sizes upon request





# Cellulose stoppers

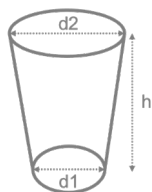
## Application

Economical and hygienic, the cellulose stoppers are efficient to seal flasks, test tubes, Erlenmeyers and various bottles in laboratories.

Made with pure cellulose fibres, they are permeable to air and sterilizable to 200 °C.

Single use recommended.

filtraTECH's item: **BOC**



Size (mm) d1 x d2 x h	BOC	Size (mm) d1 x d2 x h	BOC
5 x 9 x 30	BOC050930M	20 x 23 x 41	BOC202341D
6 x 8.5 x 11	BOC060811M	23 x 28 x 30	BOC232830D
7 x 11 x 30	BOC071130M	24 x 28 x 43	BOC242843Q
8 x 14 x 32	BOC081432M	25 x 34 x 60	BOC253460Q
9 x 12 x 30	BOC091230M	26 x 36 x 60	BOC263660Q
10 x 18 x 37	BOC101837M	28 x 33 x 63	BOC283363Q
11 x 16 x 32	BOC111632M	29 x 38 x 60	BOC293860Q
12 x 17 x 37	BOC121737M	30 x 40 x 40	BOC304040Q
12 x 18 x 42	BOC121842M	30 x 42 x 55	BOC304255C
12 x 20 x 32	BOC122032M	33 x 37 x 63	BOC333763C
13 x 18 x 32	BOC131832M	35 x 36 x 40	BOC353640Q
15 x 19 x 30	BOC151930M	35 x 40 x 60	BOC354060C
16 x 20 x 30	BOC162030M	37 x 50 x 50	BOC375050C
17 x 21 x 38	BOC172138M	39 x 61 x 63	BOC396163L
18 x 22 x 30	BOC182230M	40 x 58 x 65	BOC405865L
19 x 24 x 30	BOC192430M	58 x 65 x 70	BOC586570W

**Packing information:**  
Other sizes upon request





# INDICATOR PAPER



Roll of 5 m



Refill pack of 3 rolls



Booklet of 100 strips



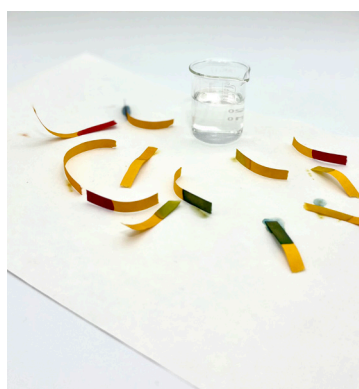
Bottle of 200 strips



Box of 100 plastic strips



pH liquid kit



**Roll (R):** roll of 5 m of reagent paper, most frequently used product; sold with a non-slipping dispenser, easily cut with its small saw, packed in an aluminum foil to protect efficiently the reagent paper from air and light.

**Refill pack (Z):** pack of 3 rolls of 5m each, hermetic protection of each roll to preserve its qualities, compatible with dispenser sold with rolls (with one extra colour scale).

**Booklet (L):** precut strips of sufficient length for your analysis, economic and convenient to use.

**Bottle (S):** precut strips protected in strong ergonomic and hermetic bottle (tamper collar).

**Plastic Strips (PS):** non-bleeding plastic strips (multiple reactive zones) for the best accuracy

**Pack (K):** pack with reactive solution (30 ml bottle), colour scale and empty testing flask with cap









# pH indicator paper

## Applications



The pH indicator papers are impregnated with one or several coloured indicator solutions which allow a quick and precise reading of pH of liquid solutions. You have to soak a piece of pH paper into the solution to be tested and compare it to the colour of the printed colorimetric scale (direct reading).

Intervals	pH value scale per grade											
0 - 10	0	1	2	3	4	5	6	7	8	9	10	-
0.5 - 5.5	0.5	1	1.5	2	2.5	3	3.5	4	4.5	5	5.5	-
1 - 11	1	2	3	4	5	6	7	8	9	10	11	-
1 - 14	1	2	3	4	5	6	7	8	9	10	12	14
3.8 - 5.4	3.8	4.1	4.4	4.6	4.8	5.1	5.4	-	-	-	-	-
4.0 - 7.0	4	4.5	5	5.5	6	6.5	7	-	-	-	-	-
5.5 - 9.0	5.5	6	6.5	7	7.5	8	8.5	9	-	-	-	-
6.4 - 8.0	6.4	6.7	7	7.2	7.5	7.7	8	-	-	-	-	-
6.5 - 10	6.5	7	7.5	8	8.5	9	9.5	10	-	-	-	-
9.5 - 13	9.5	10	10.5	11	11.5	12	12.5	13	-	-	-	-

Intervals				
0 - 10	PH010R	PH010Z	PH010L	PH010S
0.5 - 5	PH055R	PH055Z	PH055L	PH055S
1 - 11	PH111R	PH111Z	PH111L	PH111S
1 - 14	PH114R	PH114Z	PH114L	PH114S
3.8 - 5.4	PH354R	-	PH354L	PH354S
4.0 - 7.0	PH470R	-	-	PH470S
5.5 - 9.0	PH590R	PH590Z	PH590L	PH590S
6.4 - 8.0	PH680R	PH680Z	PH680L	PH680S
6.5 - 10	PH610R	-	-	-
9.5 - 13	PH913R	PH913Z	PH913L	PH913S



# Reagent paper

## Applications



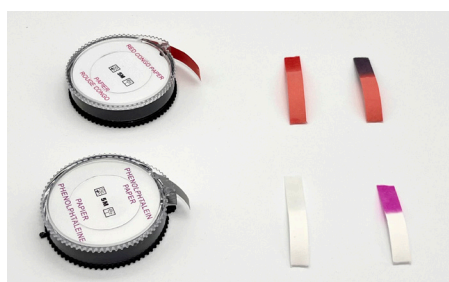
The reagent papers without colorimetric scale are simple indicator papers used for quick determination. Each paper is already coloured and will vary to another shade depending on the tested solution.

Type	Use	Colours	R	Z	L	S
Blue litmus	General control of acid or alkaline solutions		PHTRSOLBR	PHTRSOLBZ	PHTRSOLBL	PHTRSOLBS
Neutral litmus			PHTRSOLNR	-	PHTRSOLNL	PHTRSOLNS
Red litmus			PHTRSOLRR	-	PHTRSOLRL	PHTRSOLRS
Potassium iodated starched	Detection of nitrites in free chlorine		PHIOPOTAR	PHIOPOTAZ	PHIOPOTAL	PHIOPOTAS
Red congo	Control of acid reactions		PHCONGOR	-	PHCONGOL	PHCONGOS
Phenolphthalein	Control of neutrality		PHPHENOLR	-	-	PHPHENOLS
Lead acetate	Detection of sulphuric hydrogen		PHACEPLOMR	-	PHACEPLOML	PHACEPLOMS



### Packing information:

- Roll of 5 m
- Refill pack of 3 rolls
- Booklet of 100 strips
- Box of 200 strips







# Non bleeding pH test strip

## Applications



For a greater reliability on results and an easier handling, it is recommended to use pH plastic strips. Thanks to its stiffness, the strip can remain dipped into the solution. This operation cannot contaminate the sample since the indicators are fixed to cellulose fibres and do not bleed. The result is more accurate because of the multiple result zones on the strips and chart.

Intervals	pH value scale per grade															Nb of coloured zones	PS
0.5 - 5	0.5	1	1.5	2	2.5	3	3.5	4	4.5	5	-	-	-	-	-	2	PH055PS
5.5 - 9	5.5	6	6.5	7	7.5	8	8.5	9	-	-	-	-	-	-	-	2	PH590PS
9.5 - 13	9.5	10	10.5	11	11.5	12	12.5	13	-	-	-	-	-	-	-	2	PH913PS
0 - 14	0	1	2	3	4	5	6	7	8	9	10	11	12	13	14	4	PH114PS
0 - 6	0	1	2	3	4	5	6	-	-	-	-	-	-	-	-	2	PH060PS
7 - 14	7	7.5	8	8.5	9	9.5	10	10.5	11	11.5	12	12.5	13	13.5	14	2	PH714PS
4.5 - 9	4.5	5.0	5.5	5.75	6.0	6.25	6.5	6.75	7.0	7.25	7.5	8.0	8.5	9	-	2	PHDIAG



# Liquid pH pack

## Applications



To easily determine the acidity of your solutions, we developed pH liquid indicator sold in pack.

Depending on the pH value of your solution (value between 4.0 and 8.0, you will have to adjust your solution either with sulphuric acid (pH -) or sodium carbonate (pH +).

For a use in hydroponic farming, it is recommended to obtain a pH value between 5.5 and 6.5.

Included in the pack: a 30 ml bottle of reactive solution (~ 200 tests), a colour scale and an empty flask with cap to make the tests.

filtraTECH's item: **PH480K**



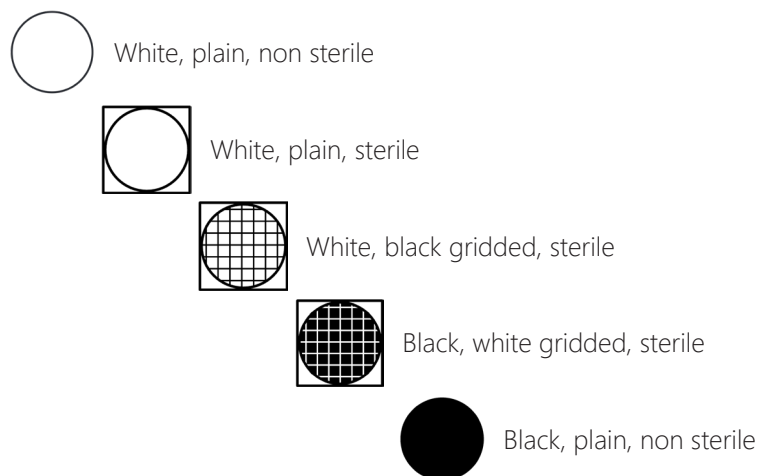
### Information:

Included:

- ✓ 30 ml bottle of reactive solution (≈ 200 tests)
- ✓ colour scale
- ✓ empty flask with cap



# MEMBRANES FILTERS



## CA - Cellulose acetate

### Application

The CA membranes are produced with pure cellulose acetate which is then modified. They have a high filtration efficiency. Naturally hydrophilic, they present a good thermic stability and a weak fixation of proteins. They are suitable for biological, aqueous samples and for filtration of proteins or enzymes.

#### Packing information:

All packs contain 100 units  
Other diameters upon request  
(ø 37 mm, 142 mm, 293 mm)

Pore size (µm) [for Ø 47 mm]	0.22	0.45	0.65	0.80	1.20	5.00
Water flow (mL/min/cm <sup>2</sup> @10psi)	9-31	33-46	45-55	85-102	110-125	280-320
Bubble point (psi)	47-71	32-36	25-32	19-22	16-19	8-10

	Ø (mm)	0.22 µm	0.45 µm	0.65 µm	0.80 µm	1.20 µm	5.00 µm
	25	MF025CA022	MF025CA045	MF025CA065	MF025CA080	MF025CA120	MF025CA0500
	47	MF047CA022	MF045CA045	MF047CA065	MF047CA080	MF047CA120	MF047CA0500
	50	MF050CA022	MF050CA045	MF050CA065	MF050CA080	MF050CA120	MF050CA0500
	90	MF090CA022	MF090CA045	MF090CA065	MF090CA080	MF090CA120	MF090CA0500
	47	MF047CA022S	MF047CA045S				





# MCE - Mixed cellulose esters

## Application

The MCE membranes are made with cellulose acetate and cellulose nitrate fibres; they are naturally hydrophilic, mechanically stable and have a high loading capacity. They are suitable for microbiological analysis, for colonies counting or for prefiltration and clarification of samples.

### Packing information:

All packs contain 100 units

\* pack of 200 units

Other diameters upon request  
(ø 37 mm, 142 mm, 293 mm)

Pore size (µm) [for Ø 47 mm]	0.22	0.45	0.65	0.80	1.20	3.00	5.00	8.00
Water flow (mL/min/cm <sup>2</sup> @10psi)	12-18	38-71	45-58	87-135	85-121	210-320	280-350	300-360
Bubble point (psi)	52-65	29-40	28-33	16-19	12-14	8-11	7-10	7-8

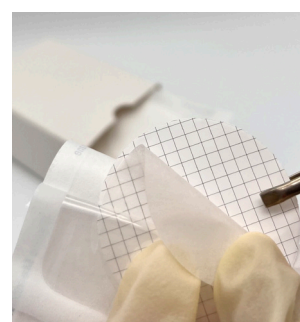
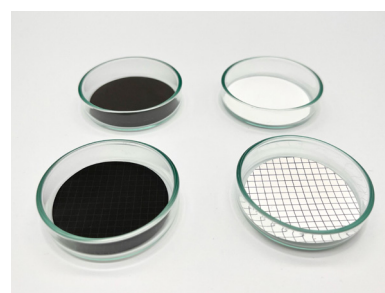
	Ø (mm)	0.22 µm	0.45 µm	0.65 µm	0.80 µm	1.20 µm	3.00 µm	5.00 µm	8.00 µm
	13	MF013ME022 *	MF013ME045 *	MF013ME065 *	MF013ME080 *	MF013ME120 *	MF013ME300 *	MF013ME500 *	MF013ME800 *
	25	MF025ME022	MF025ME045	MF025ME065	MF025ME080	MF025ME120	MF025ME300	MF025ME500	MF025ME800
	47	MF047ME022	MF047ME045	MF047ME065	MF047ME080	MF047ME120	MF047ME300	MF047ME500	MF047ME800
	50	MF050ME022	MF050ME045	MF050ME065	MF050ME080	MF050ME120	MF050ME300	MF050ME500	MF050ME800
	90	MF090ME022	MF090ME045	MF090ME065	MF090ME080	MF090ME120	MF090ME300	MF090ME500	MF090ME800

	Ø (mm)	0.22 µm	0.45 µm
	47	MF047ME022S	MF047ME045S
	50	MF050ME022S	MF050ME045S

	Ø (mm)	0.45 µm	8.00 µm
	47	MF047ME045B	MF047ME800B
	50	MF050ME045B	MF050ME800B

	Ø (mm)	0.22 µm	0.45 µm	0.80 µm
	47	MF047ME022GS	MF047ME045GS	MF047ME080GS
	50	MF050ME022GS	MF050ME045GS	MF050ME080GS

	Ø (mm)	0.45 µm	0.80 µm	8.00 µm
	47	MF047ME045BGS	MF047ME080BGS	MF047ME800BGS
	50	MF050ME045BGS	MF050ME080BGS	MF050ME800BGS

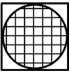





## MCE - Continuous membranes

### Application

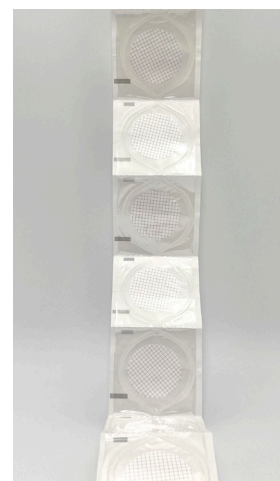
To fully complete the range of MCE membrane filters, filtraTECH also offer sterile gridded continuous membranes.

	Ø (mm)	0.22 µm	0.45 µm	0.80 µm
	47	MF047ME022GS/R	MF047ME045GS/R	MF047ME080GS/R

	Ø (mm)	0.45 µm
	47	MF047ME045BGS/R

**Packing information:**  
 All packs contain 150 units  
 Other diameters upon request

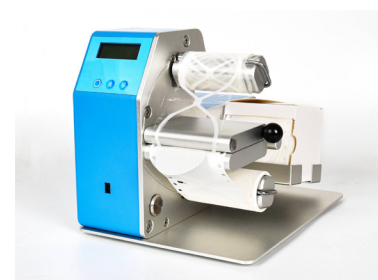


## Membrane dispenser

### Use

To easily open the plastic wrapping and delicately extract the membrane from its shell without contamination, you can buy a stainless steel membrane dispenser. Robust, practical and easy to use, this dispenser will be a great help for all your manipulations to preserve the sterility and quality of the membranes.

filtraTECH's item: **MFDISTRI**



## NYL - Polyamide

### Application

Naturally hydrophilic, nylon membranes are used for aqueous samples, alkaline or organic filtration of HPLC samples for their chemical resistance to alkaline solutions and solvents.

#### Packing information:

All packs contain 100 units  
 \* pack of 200 units  
 Other diameters upon request

Pore size (µm) [for Ø 47 mm]	0.22	0.45	0.80	1.00	3.00	5.00
Water flow (mL/min/cm²@10psi)	4-6	9-10	35-40	55-65	80-90	135-150
Bubble point (psi)	46-56	30-32	14-17	15-18	8-9	5-6

	Ø (mm)	0.22 µm	0.45 µm	0.80 µm	1.00 µm	3.00 µm	5.00 µm
	13	MF013NY022 *	MF013NY045 *	MF013NY080 *	MF013NY100 *	MF013NY300 *	MF013NY500 *
	25	MF025NY022	MF025NY045	MF025NY080	MF025NY100	MF025NY300	MF025NY500
	47	MF047NY022	MF047NY045	MF047NY080	MF047NY100	MF047NY300	MF047NY500
	90	MF090NY022	MF090NY045	MF090NY080	MF090NY100	MF090NY300	MF090NY500





## PC - Polycarbonate

### Application

Hydrophilic and chemically resistant to organic solvents, the PC membranes are very efficient in term of flow rate due to their asymmetrical structure. They present a good chemical and thermic stability and are adapted to the electronic microscope analysis.

#### Packing information:

All packs contain 100 units  
Other dimensions and pore size upon request

Pore size (µm) [for Ø 47 mm]	0.22	0.45
Water flow (mL/min/cm <sup>2</sup> @0.7bar)	10	30

Ø (mm)	0.22 µm	0.45 µm
25	MF025PC022	MF025PC045
47	MF047PC022	MF047PC045



## PES - Polyethersulfone

### Application

The highly asymmetrical pore structure of our PES membranes offers an excellent loading capacity and a high flow rate. Naturally hydrophilic, they are made with polyethersulfone polymer and are designed to remove particles during general filtration and their low protein and drug binding characteristics make them ideally suited for life science applications.

#### Packing information:

All packs contain 100 units  
Other dimensions and pore size upon request

Pore size (µm) [for Ø 47 mm]	0.22	0.45
Water flow (mL/min/cm <sup>2</sup> @10psi)	11-16	30-48
Bubble point (psi)	51-65	35-53

Ø (mm)	0.22 µm	0.45 µm
25	MF025PE022	MF025PE045
47	MF047PE022	MF047PE045
90	MF090PE022	MF090PE045



## PP - Polypropylene

### Application

Hydrophobic, polypropylene membranes show an excellent chemical compatibility with most organic solvents but can only resist temperatures below 50°C. They are specifically recommended for ionic chromatography.

#### Packing information:

All packs contain 100 units  
Other dimensions and pore size upon request

Pore size (µm) [for Ø 47 mm]	0.22	0.45
Ethyl alcohol flow (mL/min/cm <sup>2</sup> @10psi)	250-300	300-450

Ø (mm)	0.22 µm	0.45 µm
25	MF025PP022	MF025PP045
47	MF047PP022	MF047PP045
90	MF090PP022	MF090PP045





# PTFE - Polytetra-fluoroethylene

## Application

Naturally hydrophobic, the PTFE membranes are made with polytetra-fluoroethylene laminated with a PP layer. They can be used in air and gas filtration or for chemically aggressive or acid for samples. For the filtration of aqueous solutions, you should wet them first with isopropanol.

### Packing information:

All packs contain 100 units  
\* pack of 200 units

Other diameters upon request

Pore size (µm) [for Ø 47 mm]	0.22	0.45	1.00	5.00
Ethyl alcohol flow (mL/min/cm <sup>2</sup> @10psi)	8-14	15-29	75-90	447-625
Bubble point (psi)	16-25	14-19	8-9	-

Ø (mm)	0.22 µm	0.45 µm	1.00 µm	5.00 µm
13	MF013PT022 *	MF013PT045 *		
25	MF025PT022	MF025PT045	MF025PT100	MF025PT500
37		MF037PT045	MF037PT100	
47	MF047PT022	MF047PT045	MF047PT100	MF047PT500
90	MF090PT022	MF090PT045		

# RC - Regenerated cellulose

## Application

RC membrane filters are hydrophilic and show a high chemical resistance to all solvents. They are very convenient for solvent filtration.

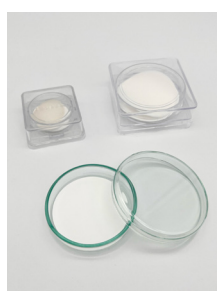
### Packing information:

All packs contain 100 units

Other diameters upon request

Pore size (µm) [for Ø 47 mm]	0.22	0.45
Water flow (mL/min/cm <sup>2</sup> @10psi)	9-11	30-48
Bubble point (psi)	19-22	10-15

Ø (mm)	0.22 µm	0.45 µm
25	MF025RC022	MF025RC045
47	MF047RC022	MF047RC045
90	MF090RC022	MF090RC045





## Glass solvent filters

### Application

Entirely made with high quality extra hard glass, this apparatus is suitable for removal of particles in solvents and for purification of HPLC solutions.

Suitable for membranes of size 47 ou 50 mm.

filtraTECH items: **AP47**

grinding type



stopper type



### AP47

grinding type

AP47G300R

stopper type

AP47G300B

#### Information:

Included:

- ✓ funnel of 300 ml
- ✓ filter support in Pyrex fritted glass (10 µm)
- ✓ flask of 1000 ml
- ✓ aluminium clamp
- ✓ rubber pipe

*Possibility to order the spare parts*

## Vacuum pump

### Application

The vacuum pump is made of aluminium alloy and can be used together with a glass solvent filter or with a multiple vacuum filtration system.

filtraTECH item: **POMPE200**

#### Information:

Pumping speed: 30 L/min  
Motor power: 180 W  
Noise: < 50 db  
Weight: 7.5 kg  
Size: 25 x 13.5 x 21 cm

## SS316 multiple-branch manifold for vacuum system

### Application

This filtration system is completely made in SS316L; it is particularly designed for the filtration of several samples at the same time.

Suitable for membranes of size 47 or 50 mm.

filtraTECH item: **RF**

3 branches

6 branches

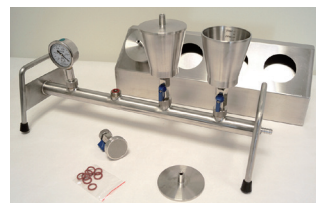
RF3SS300

RF6SS300

#### Information:

Included:

- ✓ SS316L funnels of 300 ml
  - ✓ SS316L filter support
  - ✓ Aluminium clamps
  - ✓ SS316L valves
- Spare parts available individually*



A model equipped with a manometer is also available (upon request only). This system is sold only with 3 funnels of 250 ml each.

filtraTECH item: **RF3SS250M**



# SYRINGE FILTERS



Syringe filter, non sterile



Syringe filter, sterile



Syringe filter + microfiberglass prefilter, non sterile



Syringe filter + microfiberglass prefilter, sterile

Diameter	13 mm	25 mm	33 mm
Material - all except GF	PP (injection moulding)		
Material - with GF	PP (ultrasonic welding)		
Filtration area	1.09 cm <sup>2</sup>	4.08 cm <sup>2</sup>	5.39 cm <sup>2</sup>
Sample volume	<30 mL	< 100 mL	< 200 mL
Holdup volume	< 10 µL	< 25 µL	< 35 µL
Max pressure	75 psi		
Max temperature	50°C		
Inlet	female luer lock		
Outlet	male luer slip		
If sterilisation	gamma rays		

Our range of syringe filters come in 3 sizes and various pore sizes.

Each unit is carefully marked with both membrane type and pore size to avoid any confusion in your laboratory.

The shell is made of polypropylene and is moulded with sample distribution rings in order to obtain an even distribution of the sample and hence a higher flow rate. The PP housing is assembled by injected molding; this production method gives the opportunity of inserting a colored ring for an easy recognition of the syringe filter in the laboratory (except for glass microfiber syringe filters: ultrasonically welded PP housing) and of reinforcing the body robustness during filtration process (minimized risk of opening under the syringe pressure).

For sterilized goods, we use gamma-ray methods.





# CA - Cellulose acetate

The CA syringe filters have a hydrophilic membrane that allows the filtration of aqueous solutions, especially in biology. The sterile syringe filters are suitable for cell culture applications, for proteins or enzymes samples.

Chemical compatibility: pH 3-7



Pore size (µm) [for ø 25 mm]	0.22 µm	0.45 µm	0.80 µm	1.20 µm	3.00 µm	5.00 µm
Water flow (mL/min/cm²@10psi)	9-31	33-46	85-102	110-125	260-290	280-320
Bubble point (psi)	47-71	32-36	19-22	16-19	10-13	8-10

	Diameter (mm)	0.22		0.45		0.80	
	13	SF13CA22C	100	SF13CA45C	100		
		SF13CA22M	1000	SF13CA45M	1000		
	25	SF25CA22L	50	SF25CA45L	50	SF25CA80L	50
		SF25CA22C	100	SF25CA45C	100	SF25CA80C	100
		SF25CA22M	1000	SF25CA45M	1000	SF25CA80M	1000
	33	SF33CA22L	50	SF33CA45L	50		
		SF33CA22C	100	SF33CA45C	100		
		SF33CA22M	1000	SF33CA45M	1000		
	13	SF13CA22S	50	SF13CA45S	50		
	25	SF25CA22S	50	SF25CA45S	50	SF25CA80S	50
	33	SF33CA22S	50	SF33CA45S	50		
	25	SF25CAF22L	50	SF25CAF45L	50		
		SF25CAF22M	1000	SF25CAF45M	1000		
	33	SF33CAF22L	50	SF33CAF45L	50		
		SF33CAF22M	1000	SF33CAF45M	1000		
	Diameter (mm)	1.20		3.00		5.00	
	25	SF25CA120L	50	SF25CA300L	50	SF25CA500L	50
		SF25CA120C	100	SF25CA300C	100	SF25CA500C	100
		SF25CA120M	1000	SF25CA300M	1000	SF25CA500M	1000

## Packing information:

All packs contain 50 - 100 - 1000 units  
Other references upon request



## FV - Glass microfiber

The FV syringe filters present an excellent chemical compatibility and resist to organic solvents and strong acids. They are used in prefiltration of viscous solutions or for filtration of separation of cells media before sterilization.

Chemical compatibility: pH 1-14



	Diameter (mm)	1.00
	13	SF13FV100C 100 SF13FV100M 1000
	25	SF25FV100L 50 SF25FV100C 100 SF25FV100M 1000
	33	SF33FV100L 50 SF33FV100M 1000

### Packing information:

All packs contain 50 - 100 - 1000 units  
Other references upon request

## MCE - Mixed cellulose esters

Showing a good chemical resistance, MCE syringe filters are efficient in the filtration of proteins, enzymes and other aqueous solutions. The applications are various such as clarification, purification or sterilization of biological fluids.

Chemical compatibility: pH 4-8

### Packing information:

All packs contain 50 - 100 - 1000 units  
Other references upon request

Pore size (µm) [for ø 25 mm]	0.22 µm	0.45 µm
Water flow (mL/min/cm²@10psi)	12-18	38-71
Bubble point (psi)	52-65	29-40



	Diameter (mm)	0.22	0.45
	13	SF13ME22C 100 SF13ME22M 1000	SF13ME45C 100 SF13ME45M 1000
	25	SF25ME22L 50 SF25ME22C 100 SF25ME22M 1000	SF25ME45L 50 SF25ME45C 100 SF25ME45M 1000
	33	SF33ME22L 50 SF33ME22C 100 SF33ME22M 1000	SF33ME45L 50 SF33ME45C 100 SF33ME45M 1000
	13	SF13ME22S 50	SF13ME45S 50
	25	SF25ME22S 50	SF25ME45S 50
	33	SF33ME22S 50	SF33ME45S 50
	25	SF25MEF22L 50 SF25MEF22M 1000	SF25MEF45L 50 SF25MEF45M 1000
	33	SF33MEF22L 50 SF33MEF22M 1000	SF33MEF45L 50 SF33MEF45M 1000





# NYL - Polyamide

Naturally hydrophilic, with a good mechanical strength and strong absorption, the nylon syringe filters are suitable for the filtration of HPLC samples, filtration and clarification of solvents.

Chemical compatibility: pH 3-14



Pore size (µm) [for ø 25 mm]	0.22 µm	0.45 µm	0.80 µm	1.20 µm	3.00 µm	5.00 µm
Water flow (mL/min/cm <sup>2</sup> @10psi)	4-6	9-10	35-40	52-65	80-90	135-150
Bubble point (psi)	46-56	30-32	14-17	10-14	8-9	5-6

	Diameter (mm)	0.22		0.45		0.80	
	13	SF13NY22C	100	SF13NY45C	100		
		SF13NY22M	1000	SF13NY45M	1000		
	25	SF25NY22L	50	SF25NY45L	50	SF25NY80L	50
		SF25NY22C	100	SF25NY45C	100	SF25NY80C	100
		SF25NY22M	1000	SF25NY45M	1000	SF25NY80M	1000
	33	SF33NY22L	50	SF33NY45L	50		
		SF33NY22C	100	SF33NY45C	100		
		SF33NY22M	1000	SF33NY45M	1000		
	25	SF25NYF22L	50	SF25NYF45L	50		
		SF25NYF22M	1000	SF25NYF45M	1000		
	33	SF33NYF22L	50	SF33NYF45L	50		
		SF33NYF22M	1000	SF33NYF45M	1000		
	13	SF13NY22S	50	SF13NY45S	50		
	25	SF25NY22S	50	SF25NY45S	50		
	33	SF33NY22S	50	SF33NY45S	50		
	Diameter (mm)	1.20		3.00		5.00	
	25	SF25NY120L	50	SF25NY300L	50	SF25NY500L	50
		SF25NY120C	100	SF25NY300C	100	SF25NY500C	100
		SF25NY120M	1000				



## Packing information:

All packs contain 50 - 100 - 1000 units  
Other references upon request



## PES - Polyethersulfone

Made with a hydrophilic membrane, polyethersulfone syringe filters show both a high thermic and a great chemical resistance. Their water flow rate is ideal for alkaline liquid or organic solvent filtration. They can be used for a very fast filtration of viscous solutions.

Chemical compatibility: pH 4-8

### Packing information:

All packs contain 50 - 100 - 1000 units  
Other references upon request

Pore size (µm) [for ø 25 mm]	0.22 µm	0.45 µm
Water flow (mL/min/cm²@10psi)	11-16	30-48
Bubble point (psi)	51-65	35-53



	Diameter (mm)		0.22		0.45
	13	SF13PE22C	100	SF13PE45C	100
		SF13PE22M	1000	SF13PE45M	1000
	25	SF25PE22L	50	SF25PE45L	50
		SF25PE22C	100	SF25PE45C	100
		SF25PE22M	1000	SF25PE45M	1000
	33	SF33PE22L	50	SF33PE45L	50
		SF33PE22C	100	SF33PE45C	100
		SF33PE22M	1000	SF33PE45M	1000
	13	SF13PE22S	50	SF13PE45S	50
	25	SF25PE22S	50	SF25PE45S	50
	33	SF33PE22S	50	SF33PE45S	50
	25	SF25PEF22L	50	SF25PEF45L	50
		SF25PEF22M	1000	SF25PEF45M	1000
	33	SF33PEF22L	50	SF33PEF45L	50
		SF33PEF22M	1000	SF33PEF45M	1000

## PP - Polypropylene

Hydrophobic and with an excellent chemical stability, the PP syringe filters are suitable for HPLC samples containing weak solids or sterile filtration of samples of small volume.

Chemical compatibility: pH 1-14

### Packing information:

All packs contain 50 - 100 - 1000 units  
Other references upon request

Pore size (µm) [for ø 25 mm]	0.22 µm	0.45 µm
Ethyl alcohol flow (mL/min/cm²@10psi)	250-300	300-450



	Diameter (mm)		0.22		0.45
	13	SF13PP22C	100	SF13PP45C	100
		SF13PP22M	1000	SF13PP45M	1000
	25	SF25PP22L	50	SF25PP45L	50
		SF25PP22C	100	SF25PP45C	100
		SF25PP22M	1000	SF25PP45M	1000
	33	SF33PP22L	50	SF33PP45L	50
		SF33PP22C	100	SF33PP45C	100
		SF33PP22M	1000	SF33PP45M	1000
	13	SF13PP22S	50	SF13PP45S	50
	25	SF25PP22S	50	SF25PP45S	50
	33	SF33PP22S	50	SF33PP45S	50
	25	SF25PPF22L	50	SF25PPF45L	50
		SF25PPF22M	1000	SF25PPF45M	1000



# PVDF - Polyvinylidene

PVDF syringe filters are hydrophobic and offer an excellent chemical resistance against most organic solvents and aggressive liquids. They are suitable for air and gas filtration.

Chemical compatibility: pH 1-14

## Packing information:

All packs contain 50 - 100 - 1000 units  
Other references upon request

Pore size (µm) [for ø 25 mm]	0.22 µm	0.45 µm
Ethyl alcohol flow (mL/min/cm <sup>2</sup> @10psi)	30-40	70-105
Bubble point (psi)	21-23	11-23



	Diameter (mm)	0.22	0.45
	13	SF13PV22C SF13PV22M	100 1000
		SF13PV45C SF13PV45M	100 1000
		SF13PV22L SF13PV22C SF13PV22M	50 100 1000
	25	SF25PV22L SF25PV22C SF25PV22M	50 100 1000
		SF25PV45L SF25PV45C SF25PV45M	50 100 1000
		SF25PV22L SF25PV22C SF25PV22M	50 100 1000
	33	SF33PV22L SF33PV22C SF33PV22M	50 100 1000
		SF33PV45L SF33PV45C SF33PV45M	50 100 1000
		SF33PV22L SF33PV22C SF33PV22M	50 100 1000
	13	SF13PV22S SF13PV22M	50 1000
	25	SF25PV22S SF25PV22C SF25PV22M	50 100 1000
	33	SF33PV22S SF33PV22C SF33PV22M	50 100 1000
	25	SF25PVF22L SF25PVF22C SF25PVF22M	50 100 1000
	33	SF33PVF22L SF33PVF22C SF33PVF22M	50 100 1000
	33	SF33PVF45L SF33PVF45C SF33PVF45M	50 100 1000

# RC - Regenerated cellulose

RC syringe filters are recommended for the direct filtration of aqueous solutions or of any type of organic solvent. Their benefit is to offer a great capacity of particles extraction.

Chemical compatibility: pH 3-12

## Packing information:

All packs contain 50 - 100 - 1000 units  
Other references upon request

Pore size (µm) [for ø 25 mm]	0.22 µm	0.45 µm
Water flow (mL/min/cm <sup>2</sup> @10psi)	9-11	30-48
Bubble point (psi)	19-22	10-15



	Diameter (mm)	0.22	0.45
	13	SF13RC22C SF13RC22M	100 1000
		SF13RC45C SF13RC45M	100 1000
		SF13RC22L SF13RC22C SF13RC22M	50 100 1000
	25	SF25RC22L SF25RC22C SF25RC22M	50 100 1000
		SF25RC45L SF25RC45C SF25RC45M	50 100 1000
		SF25RC22L SF25RC22C SF25RC22M	50 100 1000
	33	SF33RC22L SF33RC22C SF33RC22M	50 100 1000
		SF33RC45L SF33RC45C SF33RC45M	50 100 1000
		SF33RC22L SF33RC22C SF33RC22M	50 100 1000
	13	SF13RC22S SF13RC22M	50 1000
	25	SF25RC22S SF25RC22C SF25RC22M	50 100 1000
	33	SF33RC22S SF33RC22C SF33RC22M	50 100 1000
	25	SF25RCF22L SF25RCF22C SF25RCF22M	50 100 1000
	33	SF33RCF22L SF33RCF22C SF33RCF22M	50 100 1000
	33	SF33RCF45L SF33RCF45C SF33RCF45M	50 100 1000






# PTFE - Polytetra-fluoroethylene

Naturally hydrophobic, the PTFE syringe filters are used for air sterilization or for the preparation of HPLC samples, for the filtration of solvents and corrosive solutions. For aqueous solution filtration, you need to wet the membrane with an adapted solvent such as ethanol or methanol.

Chemical compatibility: pH 1-14



Pore size (µm) [for ø 25 mm]	0.22 µm	0.45 µm	3.00 µm
Ethyl alcohol flow (mL/min/cm²@10psi)	8-14	15-29	400-460
Bubble point (psi)	16-25	14-19	-

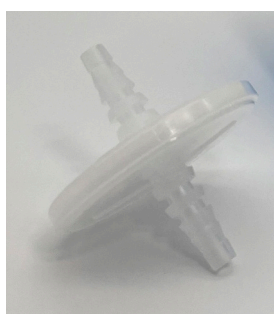
	Diameter (mm)	0.22		0.45		3.00	
	13	SF13PT22C	100	SF13PT45C	100		
		SF13PT22M	1000	SF13PT45M	1000		
	25	SF25PT22L	50	SF25PT45L	50		
		SF25PT22C	100	SF25PT45C	100		
		SF25PT22M	1000	SF25PT45M	1000		
	33	SF33PT22L	50	SF33PT45L	50		
		SF33PT22C	100	SF33PT45C	100		
		SF33PT22M	1000	SF33PT45M	1000		
		13	SF13PT22S	50	SF13PT45S	50	
25		SF25PT22S	50	SF25PT45S	50		
33		SF33PT22S	50	SF33PT45S	50		
	25	SF25PTF22L	50	SF25PTF45L	50	SF25PT300X	10
		SF25PTF22M	1000	SF25PTF45M	1000		
	33	SF33PTF22L	50	SF33PTF45L	50		
		SF33PTE22M	1000	SF33PTE22M	1000		


## Packing information:

All packs contain 50 - 100 - 1000 units  
Other references upon request

## Venting filters

For a greater filtration surface than syringe filters, the venting filters (PTFE membrane, ø 47 mm, sterile) bare hose barb connections that are adapted for the direct connection to flexibles. Thanks to its hydrophobic membrane, it prevents the return of liquids and thus protects the devices.



Pore size (µm) [for ø 25 mm]	0.22 µm	0.45 µm			
Bubble point (psi)	1.2	0.8			
	Diameter (mm)	0.22	0.45		
	47	FE47PT22S	25	FE47PT45S	25



# TABLE OF CHEMICAL COMPATIBILITY



Recommended use



Limited resistance



Non recommended use



Use to be confirmed (to be tested before use)

Acids	CA	FV	MCE	NY	PES	PTFE	PVDF
Acetic, glacial	✗	✓	+/-	+/-	✓	✓	✓
Acetic 25%	+/-	✓	+/-	+/-	✓	✓	✓
Hydrochloric concentrated	✗	✓	✗	✗	✓	✗	✓
Hydrochloric 25%	✓	✓	✗	+/-	✓	✓	✓
Sulfuric 98%	✗	✓	✗	✗	✗	✓	+/-
Sulfuric 25%	✗	✓	+/-	✗	✓	✓	✓
Nitric 65%	✗	✓	✗	?	✓	✓	+/-
Nitric 25%	✗	?	+/-	✗	+/-	✓	✓
Phosphoric 25%	✓	✓	+/-	✗	?	✓	✓
Trichloroacetic 25%	✗	✓	+/-	✗	?	✓	✓

Alcohols	CA	FV	MCE	NY	PES	PTFE	PVDF
Methanol 98%	✓	✓	✗	✓	✓	✓	✓
Ethanol 98%	✗	✓	✗	+/-	+/-	✓	✓
Ethanol 70%	✓	✓	✓	✓	✓	✓	✓
Isopropanol	✓	✓	+/-	✓	✓	✓	✓
n-Propanol	✓	✓	✓	✓	?	✓	✓
n-Butanol	✓	✓	✓	✓	✓	✓	✓
Benzyl	✗	✓	✓	✓	?	✓	✓
Ethylene glycol	+/-	✓	+/-	✓	✓	✓	✓
Propylene glycol	+/-	✓	✓	✓	✓	?	✓
Glycerol	+/-	✓	✓	+/-	+/-	✓	✓

Ketones	CA	FV	MCE	NY	PES	PTFE	PVDF
Acetone	✗	✓	✗	✗	✗	✓	✗
Cyclohexanone	✗	✓	✗	+/-	✗	✓	✓
Methyl ethyl ketone	✗	✓	?	+/-	✗	✓	✗
Isopropylacetanone	+/-	✓	✗	✓	✗	✓	✗
Methyl isobutyl ketone	✓	✓	✗	✓	?	✓	?

Bases	CA	FV	MCE	NY	PES	PTFE	PVDF
Ammonium	+/-	✓	✓	✓	✗	✓	✓
Sodium hydroxide 25%	✗	✓	+/-	✗	✓	✓	✓

Halogenated hydrocarbons	CA	FV	MCE	NY	PES	PTFE	PVDF
Methylene chloride	✗	✓	+/-	✓	✗	✗	✗
Chloroform	✗	✓	✓	✓	✗	✓	✗
Trichloroethylene	✗	✓	✓	✓	+/-	+/-	✗
Monechloro-benzene	✓	✓	✓	+/-	?	✓	✓
Carbon tetrachloride	?	✓	✗	✓	✓	✓	✗

Hydrocarbons	CA	FV	MCE	NY	PES	PTFE	PVDF
Hexane, Xylene	✗	✓	✓	+/-	✗	✓	✓
Toluene, Benzene	✗	✓	✓	✓	✓	✓	✗
Kerosene, Gasoline	✗	✓	✓	✓	+/-	✓	✓

Oxides   Ethers	CA	FV	MCE	NY	PES	PTFE	PVDF
Diethyl ether	+/-	✓	✗	✓	✗	✓	?
Dioxane	✗	✓	✗	✓	✓	✓	+/-
Tetrahydrofuran	✗	✓	✗	✓	✗	✓	✗
Dimethylsulfoxide	✗	✓	✗	✓	✗	✓	✗
Isopropyl ether	✗	✓	✗	+/-	✗	✓	?

Solvents with Nitrogen	CA	FV	MCE	NY	PES	PTFE	PVDF
Dimethyl formamide	✗	✓	✗	✓	✗	✓	✗
Diethylacetamide	✗	✓	✗	✓	?	✓	✗
Pyridine	✗	✓	✗	✓	✗	✓	✓
Acetonitrile	✗	✓	✗	✓	✗	✓	✓

Aqueous solutions	CA	FV	MCE	NY	PES	PTFE	PVDF
Hydrogen peroxide 30%	+/-	✓	?	✓	?	✓	✓
Formalin 30%	+/-	✓	✓	+/-	+/-	✓	✓



# EXTRACTION THIMBLES

 Cotton linter fibers ETC  
// Whatman : 2800

 Glass microfibers: ETG (<550°C)  
// Whatman : 2814

 Quartz microfibers: ETQ (≥550°C)  
// Whatman : 2812

With the appropriate solvents, the extraction thimbles enable to extract specific particles from a solid substance, allowing a more accurate and swifter analysis.

They are neutral and fat free and offer a high mechanical strength and an excellent retention capacity. The very high quality of the fibers used for the extraction thimbles allow a great capability of reproduction during the analysis.



Size (mm)			
19 x 90	ETC19/90	ETG19/90	
22 x 60	ETC22/60		ETQ22/65
22 x 80	ETC22/80	ETG22/80	
25 x 80	ETC25/80	ETG25/80	ETQ25/80
25 x 100	ETC25/100	ETG25/100	ETQ25/100
26 x 60	ETC26/60	ETG26/60	ETQ26/60
27 x 80	ETC27/80		
28 x 80	ETC28/80		
28 x 100	ETC28/100		
28 x 120	ETC28/120		
30 x 80	ETC30/80	ETG30/80	ETQ30/80
30 x 100	ETC30/100	ETG30/100	ETQ30/100
30 x 150	ETC30/150		
33 x 60	ETC33/60		
33 x 80	ETC33/80	ETG33/80	
33 x 94	ETC33/94	ETG33/94	
33 x 100	ETC33/100		
33 x 118	ETC33/118		
33 x 205	ETC33/205		
34 x 130	ETC34/130		
35 x 150	ETC35/150	ETG35/150	ETQ35/150
37 x 130	ETC37/130		
41 x 123	ETC41/123		
41 x 150	ETC41/150		
43 x 123	ETC43/123	ETG43/123	ETQ43/123
58 x 170	ETC58/170		
70 x 240	ETC70/240		
80 x 250	ETC80/250		

## Packing information:

All packs contain 25 units

Other sizes upon request

All indicated dimensions are interior sizes

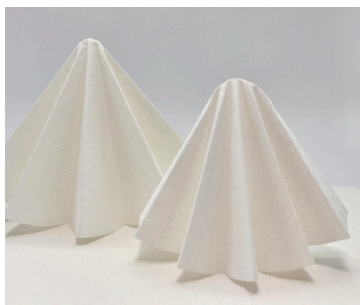


## Applications



Conceived for industrial applications, technical filters can be used in various fields: pharmaceuticals, chemicals, cosmetics, food...

Made of 100% pure cellulose fibres, they are reinforced with a specific resin which gives them extra resistance. Therefore, they can either be part of the industrial manufacturing process or be employed for the filtration of liquid solutions to separate the materials (for example for the recovery of precious metals).



Because your tools and machines have been developed to meet your needs, filtraTECH can create cut-out discs.

Besides the standard sizes, we know how to work the filters to adapt them perfectly to your industrial tools, from samples or work plans.




*Do not hesitate to contact us for a customized quotation (non-standardized size, specific requirements)*

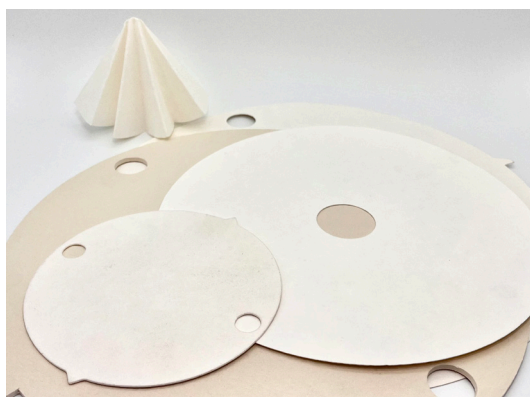
## Smooth

	Weight (g/m <sup>2</sup> ) DIN 53104	Thickness (mm)	Pore size (µm)	Filtration speed (sec) DIN 53137	Burst strength (kg/cm <sup>2</sup> )
<b>FT103</b> // Whatman: 3	<i>Thick paper, particularly adapted for small particle filtration (salted solutions, alcohols, ethers...)</i>				
	150	0.3	3-6	80	3.90
<b>FT104</b> // Whatman: 287	<i>Smooth paper made of 70% cellulose and 30% shell powder (kieselguhr) dedicated to the clarification of fragrances / oils, or the filtration of lactic acid serums, vaccines and other injectable solutions</i>				
	140	0.35	-	30	1.20
<b>FT105</b>	<i>Mostly recommended for filtration that require high mechanical and chemical resistance (alkaline products, oils, sugar)</i>				
	185	0.39	12-16	65	4.00
<b>FT106</b>	<i>Thick paper, particularly adapted for small particle filtration (salted solutions, alcohols, ethers...)</i>				
	160	0.47	50-80	12	1.5
<b>FT107</b>	<i>Smooth paper made of 70% cellulose and 30% shell powder (kieselghur) dedicated to the clarification of fragrances / oils, or the filtration of lactic acid serums, vaccines and other injectable solutions</i>				
	160	0.38	20-30	45	3.20
<b>FT108</b>	<i>Mostly recommended for filtration that require high mechanical and chemical resistance (alkaline products, oils, sugar)</i>				
	85	0.18	12-15	60	1.45







# Item codes

	Size (mm)	FT103	FT104	FT105	FT106	FT107	FT108
	55	FT103A0055					
	70	FT103A0070					
	90	FT103A0090			FT106A0090		
	110	FT103A0110		FT105A0110	FT106A0110		
	125	FT103A0125		FT105A0125	FT106A0125		FT108A0125
	150	FT103A0150		FT105A0150	FT106A0150		FT108A0150
	190	FT103A0190	FT104A0190		FT106A0190		
	250	FT103A0250			FT106A0250		FT108A0250
	330	FT103A0330			FT106A0330		
	400						
	500	FT103A0500			FT106A0500	FT107A0500	
	600	FT103A0600			FT106A0600		FT108A0600
	650	FT103A0650			FT106A0650	FT107A0650	
	700						
	800	FT103A0800			FT106A0800		
	1000	FT103A1000			FT106A1000		
	150	FT103P0150		FT105P0150	FT106P0150	FT107P0150	
	190	FT103P0190		FT105P0190	FT106P0190	FT107P0190	
	250	FT103P0250			FT106P0250	FT107P0250	
	330	FT103P0330			FT106P0330	FT107P0330	
	400	FT103P0400			FT106P0400	FT107P0400	
	500	FT103P0500		FT105P0500	FT106P0500	FT107P0500	
	600	FT103P0600	*		FT106P0600	*	FT108P0600
	650	FT103P0650	*	FT105P0650	*	FT107P0650	*
	700	FT103P0700	*		FT106P0700	*	FT107P0700
	800	FT103P0800	*	FT105P0800	*	FT107P0800	*
	1000	FT103P1000	**		FT106P1000	**	
	460 x 570	FT103F4657C					
	500 x 580						
	580 x 580	FT103F5858C					FT108F5858C



## Packing information:

\* pack of 25  
\*\* pack of 50  
All packs contain 100 units

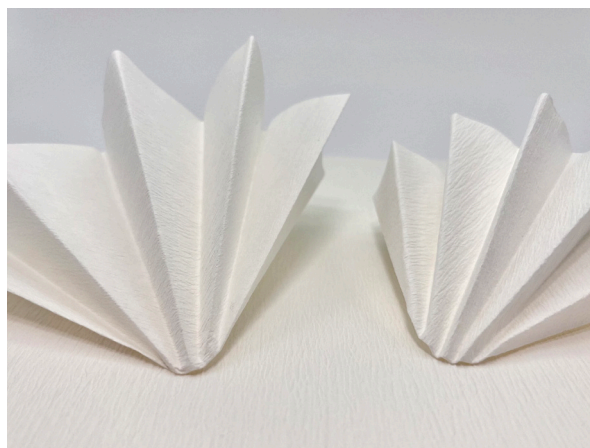
-  Disc + 2 holes + 2 lugs (capillary)
  -  Plain disc + hole
  -  Sheet + 2 holes
  -  Sheet + 4 holes
- Specifications upon request*





# Creped

	Weight (g/m <sup>2</sup> ) DIN 53104	Thickness (mm)	Pore size (µm)	Filtration speed (sec) DIN 53137	Burst strength (kg/cm <sup>2</sup> )
<b>FT100</b>	<i>Thin filter paper, for the filtration of precipitated coarse particles (viscous products such as oils), good water resistance</i>				
	60	0.25	50-65	4	1.55
<b>FT101</b> // Whatman: 520b	<i>Thick filter paper, often used for the filtration of fats in food (syrops, oils...) or for heated filtration</i>				
	160	0.55	38-75	26	1.55
<b>FT102</b>	<i>Very thick filter paper, fast filtration speed, good burst resistance</i>				
	190	0.65	25-35	27	1.90
<b>FT109</b>	<i>Solutions a little bit acid or alkaline for the filtration of industrial colored, galvanic industry</i>				
	73	0.28	16-25		
<b>FT110</b> // Whatman: 520a	<i>Thin filter paper, for the filtration of precipitated coarse particles (viscous products such as oils), good water resistance</i>				
	90	0.33	25-35	25	1.65
<b>FT111</b>	<i>Thick filter paper, often used for the filtration of fats in food (syrops, oils...) or for heated filtration</i>				
	140	0.45	10-20	50	1.45
<b>FT113</b>	<i>Very thick filter paper, fast filtration speed, good burst resistance</i>				
	240	0.78	55-65	28	3.00





# Item codes

	Size (mm)	FT100	FT101	FT102	FT109	FT110	FT111
A	55						
	70	FT100A0070					
	90	FT100A0090					
	110	FT100A0110	FT101A0110				
	125	FT100A0125			FT109A0125		
	150		FT101A0150			FT110A0150	
	190		FT101A0190				
	250		FT101A0250				
	330		FT101A0330			FT101A0330	
	400		FT101A0400				FT111A0400L *
	500		FT101A0500	FT102A0500		FT110A0500	
	600	FT100A0600	FT101A0600			FT110A0600	
	650	FT100A0650	FT101A0650				
	700						
	800		FT101A0800	FT102A0800			
	1000		FT101A1000				
P	150	FT100P0150	FT101P0150				
	190	FT100P0190	FT101P0190				
	250		FT101P0250				
	330	FT100P0330	FT101P0330				
	400	FT100P0400	FT101P0400				
	500	FT100P0500	FT101P0500				
	600		FT101P0600 *			FT110P0600 *	
	650		FT101P0650 *				
	700		FT101P0700 *				
	800		FT101P0800 *	FT102P0800 *			
	1000		FT101P1000 ***				
F	420 x 520	FT100F4252D **					
	580 x 580	FT100F5858D **				FT110F5858C	



## Packing information:

All packs contain 100 units

\* Pack of 50 units

\*\* Pack of 500 units

\*\*\* Pack of 25 units

Other sizes upon request

Disc + 2 holes + 2 lugs (capillary)

Plain disc + 1 hole

Sheet + 2 holes

Sheet + 4 holes

Specifications upon request



# FILTER BOARDS



Designed for industrial filtration, filtraTECH's series of board filters has been shaped to answer most encountered applications and can be used in a filter press system.



Disc + 2 holes + 2 lugs (capillary)

Plain disc + 1 hole

Sheet + 2 holes

Sheet + 4 holes

*Specifications, shapes and references upon request*



	Weight (g/m <sup>2</sup> )	Thickness (mm)	Pressure (lg/cm <sup>2</sup> )
<b>FT200</b> // Whatman: 2589a	<i>Chemical products, edible oils</i>		
	190	0.41	1.6
<b>FT201</b>	<i>Galvanic baths, lacquers, hydrocarbons</i>		
	280	0.65	2.6
<b>FT202</b> // Whatman: 2589b	<i>Non-edible mineral oils</i>		
	300	0.70	2.8
<b>FT203</b> // Whatman: 2589c	<i>Galvanic baths, non-edible oils, resins</i>		
	390	0.93	3.2

	Weight (g/m <sup>2</sup> )	Thickness (mm)	Pressure (lg/cm <sup>2</sup> )
<b>FT204</b> // Whatman: 2589d	<i>Essential oils, edible oil brilliant filtration</i>		
	500	1.13	7.0
<b>FT205</b> // Whatman: 2208	<i>Non-edible oils, chemical products, hydrocarbons</i>		
	350	0.78	5.0
<b>FT207</b> // Whatman: 5703	<i>Technical oils, paraffin, cosmetics clarification</i>		
	250	0.58	3.5
<b>FT208</b> // Whatman: 2282	<i>Water process, pharmaceuticals, active carbon retention</i>		
	450	1.03	4

## FILTER PRESS SYSTEM

When the industrial process has not been conceived initially to integrate a filtration system, it is possible to use a removable filter-press system made of stainless steel. Easy to handle, economical and compact, the filter press system enables to filter small quantities of liquids while maintaining an accurate level of filtration.

It is connected to standard 220V power and has an inlet connection of 20 mm diameter.

Size (cm)	Max pressure (bar)	18 PP boards
20 x 20	2	FP18SS2020





# FILTER SHEETS



The range of filter sheets conceived by filtraTECH can be used in many industrial applications and enable to obtain all types of filtration (prefiltration, clarification, sterilization). All conform to food usage, they show a great chemical resistance and are all traceable. The filter sheets can be used in all sorts of industries: cosmetics, pharmaceuticals, food, chemicals...

4 different compositions available:

**C** = 100% cellulose

**C + K** = cellulose + kieselghur

**C + PE** = cellulose + polyethylen fibres

**C + K + PE** = cellulose + kieselghur + polyethylene fibres

Disc + 2 holes + 2 lugs (capillary)

Plain disc + 2 holes

Sheet + 2 holes

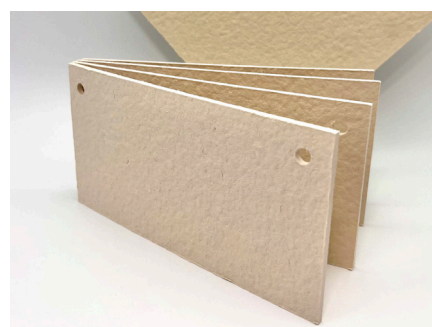
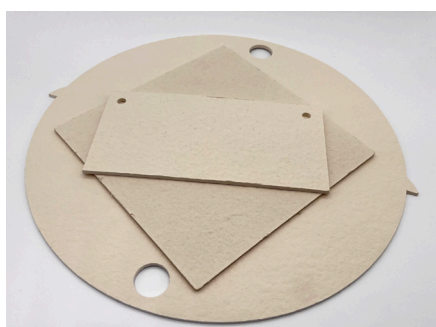
## Packing information

Also sold in lenticular modules (diameter 12" or 16")

*Specifications, shapes and references upon request*

## Prefiltration

	Weight (g/m <sup>2</sup> )	Thickness (mm)	Permeability (L/m <sup>2</sup> /min)	Composition
<b>FT300</b>	675-825	3.8-4.3	8200-14600	<b>C</b>
<b>FT301</b>	700-855	3.5-3.8	5700-10200	<b>C</b>
<b>FT302</b>	1080-1320	3.9-4.4	760-1350	<b>C</b>
<b>FT303</b>	720-880	3.1-3.5	5250-9300	<b>C</b>
<b>FT304</b>	945-1155	3.5-4.0	1100-2000	<b>C + K</b>
<b>FT305</b>	800-900	2.1-2.3	v	<b>C + K</b>







## Clarification

	Weight (g/m <sup>2</sup> )	Thickness (mm)	Permeability (L/m <sup>2</sup> /min)	Composition
<b>FT306</b>	1000-1200	3.2-3.6	420-750	<b>C + K + PE</b>
<b>FT307</b>	1000-1250	3.5-4.0	480-890	<b>C + K</b>
<b>FT308</b>	1100-1200	3.2-3.6	225-400	<b>C + K + PE</b>
<b>FT309</b>	1100-1350	3.5-4.0	240-500	<b>C + K</b>
<b>FT310</b>	1100-1300	3.2-3.6	140-250	<b>C + K + PE</b>
<b>FT313</b>	1200-1450	3.3-3.7	80-140	<b>C + K</b>
<b>FT314</b>	1350-1550	3.6-3.9	70-120	<b>C + K + PE</b>

## Sterilization

	Weight (g/m <sup>2</sup> )	Thickness (mm)	Permeability (L/m <sup>2</sup> /min)	Composition
<b>FT315</b>	1300-1500	3.7-3.9	70-80	<b>C + K</b>
<b>FT320</b>	1350-1550	3.6-3.9	70-120	<b>C + K + PE</b>
<b>FT325</b>	1400-1600	3.5-4.0	50-65	<b>C + K</b>
<b>FT326</b>	1350-1550	3.7-3.9	40-50	<b>C + K</b>
<b>FT330</b>	1500-1700	3.9-4.1	10-15	<b>C + K</b>



# NON WOVEN FILTERS



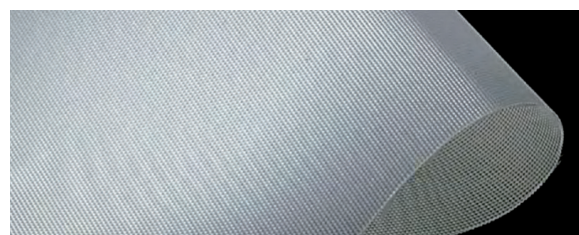
Non woven filters are made of long synthetic fibres combined with synthetic resins which offer a stronger resistance to humidity compared to cellulose. They show both a good absorption capacity and a high level of filtration speed and are ideal for the filtration of visible particles, the recovery of largest particles of precious metals, milk, water process...

	Weight (g/m <sup>2</sup> )	Thickness (mm)	Pore size (µm)	Water permeability (m <sup>3</sup> /m <sup>2</sup> /h)	Air permeability (L/m <sup>2</sup> /min)
<b>NT20</b>	20	0.18	-	-	5600
<b>NT25</b>	25	0.20	193	369	5399
<b>NT35</b>	35	0.26	181	323	4633
<b>NT50</b>	50	0.35	158	254	3483
<b>NT65</b>	65	0.32	-	550	2600
<b>NT80</b>	80	0.60	-	191	2260
<b>NT110</b>	110	0.70	50	400	2200
<b>NT130</b>	130	1.20	45	370	1750

# MESH FILTERS



Depending on the acid resistance or the abrasion you are looking for, 2 fabrics of mesh filters (TF) are available for air or gas filtration, for water process: nylon (NY) or polypropylene (PP).



	Composition	Thickness (mm)	Max temperature (°C)	Abrasion resistance	Acid resistance
<b>TF - NY</b>	Polyamide 6.6	1-325	115	Good	Limited
<b>TF - PP</b>	Polypropylene	75-5100	90	Limited	Good

## Packing information

Rolls: 1020 mm large  
All length, size and references  
upon request



Grade	Section	Page
AP	Device	44
BOC	Stopper	34
BSC	Medical	30
CF110	Filter card	29
CH51	Chromatography	32
CH53	Chromatography	32
CH54	Chromatography	32
CH58	Chromatography	32
CH59	Chromatography	32
CY430	Medical	30
ES	Hygiene	21
ETC	Thimbles	53
ETG	Thimbles	53
ETQ	Thimbles	53
FE	Venting	51
FP	Device	58
FQ30	Quartz microfiber	18-19
FS90	Sugar industry	28
FS91	Sugar industry	28
FS92	Phase separation	24
FS93	Phosphate free	24
FS94	Phosphate free	24
FS96	Low nitrogen	25
FS97	Brewery	26
FS98	Black	25
FS99	Activated carbon	26
FT100	Technical	56-57
FT101	Technical	56-57
FT102	Technical	56-57
FT103	Technical	54-55
FT104	Technical	54-55
FT105	Technical	54-55
FT106	Technical	54-55
FT107	Technical	54-55
FT108	Technical	54-55
FT109	Technical	56-57
FT110	Technical	56-57
FT111	Technical	56-57
FT113	Technical	56-57
FT200	Board	58
FT201	Board	58
FT202	Board	58
FT203	Board	58
FT204	Board	58
FT205	Board	58
FT207	Board	58
FT208	Board	58
FT300	Sheet	59
FT301	Sheet	59
FT302	Sheet	59
FT303	Sheet	59
FT304	Sheet	59
FT305	Sheet	59
FT306	Sheet	60
FT307	Sheet	60
FT308	Sheet	60
FT309	Sheet	60

Grade	Section	Page
FT310	Sheet	60
FT311	Sheet	60
FT313	Sheet	60
FT314	Sheet	60
FT315	Sheet	60
FT320	Sheet	60
FT325	Sheet	60
FT326	Sheet	60
FT330	Sheet	60
FV21	Glass microfiber	16-17
FV22	Glass microfiber	16-17
FV23	Glass microfiber	16-17
FV24	Glass microfiber	16-17
FV25	Glass microfiber	16-17
FV26	Glass microfiber	16-17
FV27	Glass microfiber	18-19
FV28	Glass microfiber	16-17
FV29	Glass microfiber	18-19
FV31	Glass microfiber	16-17
FV32	Glass microfiber	16-17
MF-CA	Membrane	39
MF-MCE	Membrane	40-41
MF-NYL	Membrane	41
MF-PC	Membrane	42
MF-PES	Membrane	42
MF-PP	Membrane	42
MF-PTFE	Membrane	43
MF-RC	Membrane	43
MFDISTRI	Device	41
NPA	Weighing	23
NP581010	Weighing	23
NT20	Non woven	61
NT25	Non woven	61
NT35	Non woven	61
NT50	Non woven	61
NT65	Non woven	61
NT80	Non woven	61
NT110	Dairy, non woven	29-61
NT130	Dairy, non woven	29-61
OP12	Optical	22
OP13	Optical	22
PA320	Medical	30
PB190	Blotting	33
PB255	Blotting	33
PE25	Weighing	23
PE45	Weighing	23
PG110	Test seed	27
PG120	Test seed	27
PG155	Test seed	27
PG160	Test seed	27
PG300	Test seed	27
PH010	Indicator	36
PH055	Indicator	33-36-38
PH060	Indicator	38
PH111	Indicator	36
PH114	Indicator	36-38
PH354	Indicator	36
PH470	Indicator	36

Grade	Section	Page
PH480	Indicator	38
PH590	Indicator	36-38
PH610	Indicator	36
PH680	Indicator	36
PH714	Indicator	38
PH913	Indicator	36-38
PHACEPLOM	Indicator	37
PHCONGO	Indicator	37
PHDIAG	Indicator	38
PHIOPOTA	Indicator	37
PHPHENOL	Indicator	37
PHTRSOLB	Indicator	37
PHTRSOLN	Indicator	37
PHTRSOLR	Indicator	37
PJ	Cleaning	21
POMPE	Device	44
PP125	Hygiene	20
PP210	Hygiene	20
PP400	Hygiene	20
PS60	Medical	31
QL01	Qualitative	10-11
QL02	Qualitative	10-11
QL03	Qualitative	10-11
QL04	Qualitative	10-11
QL05	Qualitative	10-11
QL08	Qualitative	10-11
QT41	Quantitative	12-13
QT42	Quantitative	12-13
QT43	Quantitative	12-13
QT44	Quantitative	12-13
QT45	Quantitative	12-13
QT46	Quantitative	12-13
QT48	Quantitative	14-15
QT49	Quantitative	14-15
QT51	Quantitative	14-15
QT53	Quantitative	14-15
QT55	Quantitative	14-15
RF	Device	44
SF-CA	Syringe	46
SF-FV	Syringe	47
SF-MCE	Syringe	47
SF-NYL	Syringe	48
SF-PES	Syringe	49
SF-PP	Syringe	49
SF-PTFE	Syringe	51
SF-PVDF	Syringe	50
SF-RC	Syringe	50
SIT	Medical	31
SL	Blotting, optical	22
ST60	Standard	8-9
ST61	Standard	8-9
ST62	Standard	8-9
ST63	Standard	8-9
ST64	Standard	8-9
ST67	Standard	8-9
SUP	Hygiene	21
TF-NY	Mesh	61
TF-PP	Mesh	61



# TABLE OF COMPARISON

This table shows all products which are similar or most likely to be compared depending on the analysis.  
Ask for our free samples, you will be able to compare the results obtained...

filtraTECH	Whatman	Macherey Nagel	Hahnemühle	Advantec	Sartorius	Munktell
Quantitative filters (ashless)						
QT41	41   589/1	640w	FP589/1	5A	388	00R   388
QT42	43   589/2	640m	FP589/2	3	389	OOK   389
QT43	40   589/5	64md	FP589/5	5B	392	OOA   392
QT44	44   589/6	64dd	FP589/6	6	390	OO6   390
QT45	42   589/3	640d	FP589/3	5C	391	OOH   391
QT46	-	640de	-	4A	393	393
QT48	-	-	-	-	-	3/M
QT49	589/4	-	FP589/4	-	389F	-
QT51	541	1640w	1505	-	1388	-
QT53	540	1640md	1506	-	1392	-
QT55	542	1640d	1507	-	1391	-
Qualitative filters						
QL01	4	617	FP604	1	1288	3   1288
QL02	597	616	FP597	2	1289	1F   1289
QL03	2	616md	FP593	232	292a   1292	n°2
QL04	6	619	FP594	-	1290	106   1290
QL05	5   602h	619eh	FP602h	235	1291	120H   1291
QL08	602eh	619de	FP602eh	-	293	293
Standard filters						
ST60	93	-	250	-	3hw	3hw
ST61	1	615	FP595	231	292   4b	n°1
ST62	114	713	235	101	6	6
ST64	113	651	FP520b II	-	37/N	37/N
Glass microfibre   Quartz microfibre filters						
FV21	GF/A	GF-1	FPGF50	GA-55	MGA	MGA
FV22	GF/B	GF-2	FPGF51	GB-140	MGB	MGB
FV23	GF/C	GF-3	FPGF52	GC-50	MGC	MGC
FV24	GF/D	GF-4	FPGF53	GD-120	MGD	MGD
FV25	GF/F	GF-5	FPGF55	GF-75	MGF	MGF
FV26	934-AH	GF-6	-	GS-25	MGG	MG550HA
FV27	GF10	85/90	FPGF10	-	MG227	MG277
FV29	GF6	-	FPGF6	-	MG161	MG161
FQ30	QM/A	QF10	QFH	QR-100	Q3400	T293
Chromatography						
CH51	1CHR	260	FP2040a	151B	FN1	FN1
CH58	3MMCHR	261	FP2316	1514A	FN7a	FN7a
CH59	17CHR	218	FP2668	526	FN30	FN30v





12-18 rue Antoine de Lavoisier  
45800 Saint Jean de Braye  
France



[www.filtratech.fr](http://www.filtratech.fr)



+33 (0) 2 38 54 52 50



Orders and information: [sales@filtratech.fr](mailto:sales@filtratech.fr)

